

Southern Village Tree Inventory & Management Plan | 2014

Submitted by
The Bartlett Inventory Solutions Team

Jarod Faas, Inventory Arborist

ISA Board Certified Master Arborist and Municipal Specialist #SO-5700BM, ISA Tree Risk Assessment Qualified

Joshua Willis, Inventory Arborist

ISA Certified Arborist #MA-5500A

Michael Sherwood, Bartlett Inventory Solutions Manager

ISA Board Certified Master Arborist & Municipal Specialist #SO-1845BM, ISA Tree Risk Assessment Qualified, Registered Consulting Arborist #524

Bryan Lowrance, Arborist Representative

ISA Certified Arborist # SO-5413A



Bartlett Inventory Solutions

The R.A. Bartlett Tree Research Laboratories
13768 Hamilton Road
Charlotte NC 28278-8213
704-588-1150
www.bartlett.com

EXECUTIVE SUMMARY

In August 2014, the Bartlett Inventory Solutions Team from Bartlett Tree Experts conducted an inventory of trees at Southern Village. We identified 836 trees that included 21 species. The attributes that we collected include tree latitude and longitude, size, age and condition class, and a visual assessment of tree structure, health, and **vigor**.

We conducted the attribute collection using a sub-meter accuracy Global Positioning Satellite Receiver (GPSr) device with an error-in-location potential of not greater than three meters. Our recommendations for the subject trees over the next three-year period include:

Tree Risk Assessments and Mitigation

Perform the recommended tree risk mitigation activities for the 4 trees (0.48%) that were assigned risk ratings in the field using the International Society of Arboriculture's (ISA) risk matrices.

Soil Sampling

Taking soil samples around 39 trees (5%) and throughout planting beds and actively managed areas. Soil analysis provides information on the presence of soil nutrients, pH, organic matter, and cation exchange capacity.

Bulk Density Sampling

Taking bulk density samples throughout planting beds and actively managed areas to determine the amount of soil compaction.

Root Invigoration

Perform Bartlett's patented Root Invigoration on trees which need it (as investigated with soil sampling) to improve aeration and promote more efficient root growth, especially for high-value trees in disturbed areas.

Root Collar Excavations

Perform **root collar** excavations to 742 trees (89%) to lower risk of damaging conditions such as **girdling roots**, basal cankers, masking of root decay and lower-stem decay, and predisposing trees to various insect and disease pests.

Integrated Pest Management (IPM)

Implement Bartlett's PHC program to monitor pests and diseases on the subject trees. Treatments are therapeutic and preventive, and treatment timing is based on pest life cycle.

Pruning

Prune 764 trees (92%) for safety, health, structure, and appearance. Pruning will comply with American National Standards Institute (ANSI) A300 for pruning and ANSI Z133.1 for safety.

Cabling & Bracing

Install new structural support systems in 18 trees (2%) to reduce risk of branch or whole tree failure.

Removals

Remove 16 trees (2%) due to condition or because of its location in relation to other trees to try and prevent competition or damage to infrastructure.

Advanced Tree Risk Assessments (Level 3)

Provide an advanced tree risk assessment for 4 trees (0.48%) to evaluate the impact of wood decay in **stems** and **buttress roots** that show potential for failure.

Priority of Tree and Shrub Work

Priority class recommendations are based on a three-year management plan that takes into consideration tree species, condition, location, age, and proximity to infrastructure. We intend that this rating system assist decision makers in prioritizing tree pruning, cabling and bracing, and tree lightning protection recommendations. *Trees with a priority of 1 and an Overall Risk Rating of Extreme or High (see definitions in the next section) should be addressed immediately.* Prioritization does not take into account any budgetary or financial considerations.

Recommendations for Priorities 1, 2, 3, and 4 are all based on observations by the inventory arborist. The following additional information clarifies each priority class:

- Priority 1** To be addressed in year 1 of the management cycle. Priority 1 may include trees with large dead wood, structural defects, located in exposed sites, high aesthetic value, and/or parts that are currently negatively interacting with infrastructure, such as branches that touch buildings, interfere with signage or lighting, or obstruct pathways.
- Priority 2** To be addressed in year 2 of the management cycle. Priority 2 may include trees with small dead wood, developing structural defects, located in semi-exposed sites, moderate esthetic value, and/or parts that are anticipated to negatively interact with infrastructure, such as branches that touch buildings, interfere with signage or lighting, or obstruct pathways.
- Priority 3** To be addressed in year 3 of the management cycle. Priority 3 may include trees with small dead wood, developing structural defects, located in lesser used sites, and/or parts that are anticipated to negatively interact with infrastructure, such as branches that rub on buildings, interfere with signage or lighting, or obstruct pathways.
- Priority 4** To be addressed in year 4 of the management cycle. Priority 4 may include trees with developing structural defects, located in lesser used sites, and/or parts that are anticipated to negatively interact with infrastructure, such as branches that rub on buildings, interfere with signage or lighting, or obstruct pathways.

Pruning

Each of the following is a selective pruning technique to achieve the pruning goal described:

- Clean** Remove one or more of dead, diseased, and/or broken branches
- Raise** Provide vertical clearance
- Thin** Reduce density of live branches
- Reduce** Reduce height or spread, sometimes for a particular branch (overextended or co-dominant)
- Structure** Select live branches and stems to influence orientation, spacing, growth rate, strength of attachment, and ultimate size of branches and stems; possibly to reduce defects or space main branches on mature trees

Stand Dynamics

Tree Species Identified

Our inventory revealed 21 species of trees, as detailed in the following table:

Table 1: TREE SPECIES IDENTIFIED

Genus	Species	Common Name	Count	% Distribution Total
<i>Acer</i>	<i>buergeranum</i>	Maple-Trident	2	<1%
	<i>platanooides</i>	Maple-Norway	1	<1%
	<i>rubrum</i>	Maple-Red	324	39%
	<i>saccharinum</i>	Maple-Silver	3	<1%
	<i>saccharum</i>	Maple-Sugar	68	8%
	<i>x freemanii</i>	Maple-Freeman's	35	4%
Acer Total			433	52%
<i>Carpinus</i>	<i>betulus</i>	Hornbeam-European	1	<1%
<i>Gleditsia</i>	<i>triacanthos</i> var. 'inermis'	Honeylocust-Thornless Common	2	<1%
<i>Pistacia</i>	<i>chinensis</i>	Pistache-Chinese	2	<1%
<i>Platanus</i>	<i>occidentalis</i>	Sycamore-American	140	17%
<i>Quercus</i>	<i>alba</i>	Oak-White	3	<1%
	<i>coccinea</i>	Oak - Scarlet	5	1%
	<i>lyrata</i>	Oak-Overcup	20	2%
	<i>nigra</i>	Oak-Water	15	2%
	<i>palustris</i>	Oak-Pin	86	10%
	<i>phellos</i>	Oak-Willow	6	1%
	<i>rubra</i>	Oak- Northern Red	29	3%
	<i>shumardii</i>	Oak - Shumard	4	<1%
	<i>stellata</i>	Oak-Post	3	<1%
Quercus Total			171	21%
<i>Ulmus</i>	<i>parvifolia</i>	Elm-Chinese	62	7%
<i>Zelkova</i>	<i>serrata</i>	Zelkova-Japanese	25	3%
Grand Total			836	100%

Estimated Value

As part of the Bartlett inventory process, we have included an estimated value for each tree and a cumulative total for all trees inventoried. To calculate the estimated value, we use a modified version¹ of the Trunk Formula Method published by the Council of Tree and Landscape Appraisers in *The Guide for Plant Appraisal*, 9th Edition.

The following data fields are used in this formula:

Table 2: DATA FIELDS FOR DETERMINING ESTIMATED TREE VALUE

Data Field	Description
Size	Based on tree DBH (4.5 feet above grade)
Species Factor	Relative species desirability based on 100% for the tree in that geographical location. In most cases, species desirability ratings, published by the local chapter of the International Society of Arboriculture, are used for adjustment.
Condition Factor	Rating of the tree's structure and health based on 100%
Location Factor	Average rating for the site and the tree's contribution and placement, based on 100%

$$\text{Estimated Value} = \text{Size} * \text{Species Factor} * \text{Condition Factor} * \text{Location Factor}$$

The estimated cumulative total value for all trees inventoried is **\$1,492,192.90**. The following table lists the ten trees with the highest estimated values:

Table 3: TOP TEN TREES - HIGHEST ESTIMATED VALUE

Tree ID	Common Name	Genus	Species	DBH	Estimated Value
578	Maple-Red	<i>Acer</i>	<i>rubrum</i>	19	\$7,637.23
565	Maple-Red	<i>Acer</i>	<i>rubrum</i>	16	\$5,415.87
471	Elm-Chinese	<i>Ulmus</i>	<i>parvifolia</i>	16	\$5,415.87
74	Maple-Red	<i>Acer</i>	<i>rubrum</i>	16	\$5,415.87
634	Maple-Red	<i>Acer</i>	<i>rubrum</i>	16	\$5,415.87
640	Maple-Red	<i>Acer</i>	<i>rubrum</i>	15	\$4,760.04
643	Maple-Red	<i>Acer</i>	<i>rubrum</i>	15	\$4,760.04
622	Maple-Red	<i>Acer</i>	<i>rubrum</i>	15	\$4,760.04
477	Elm-Chinese	<i>Ulmus</i>	<i>parvifolia</i>	15	\$4,760.04
467	Elm-Chinese	<i>Ulmus</i>	<i>parvifolia</i>	15	\$4,760.04

¹ This version does not consider cost of purchase and installation of the largest available "like tree."

Mulch Application

Proper mulching (Figures 5 and 6) provides many benefits to trees and shrubs. It moderates soil temperatures, reduces soil moisture loss, reduces soil compaction, provides nutrients, and improves soil structure. This practice results in more root growth and healthier plants. Figure 7 illustrates root growth density under grass versus mulch. Mulch is frequently applied incorrectly (Figure 8), so we recommend that readers inspect the technical report on mulch application guidelines that appears in the Appendix.

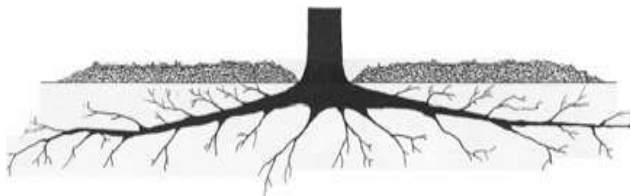


Figure 1: Example of how mulch should be installed, 2-4 inches thick and not against the trunk.

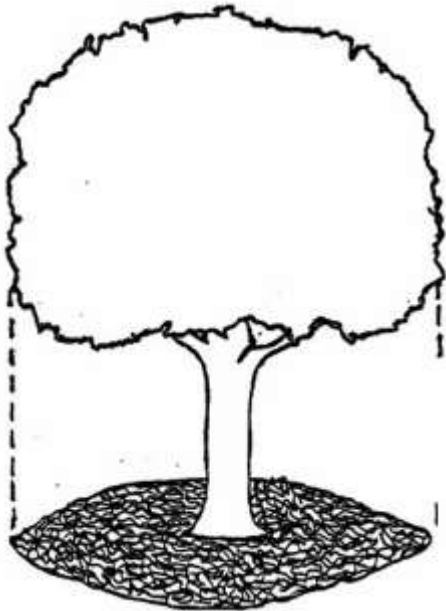


Figure 2: Example of how mulch should be applied from the trunk to the dripline.

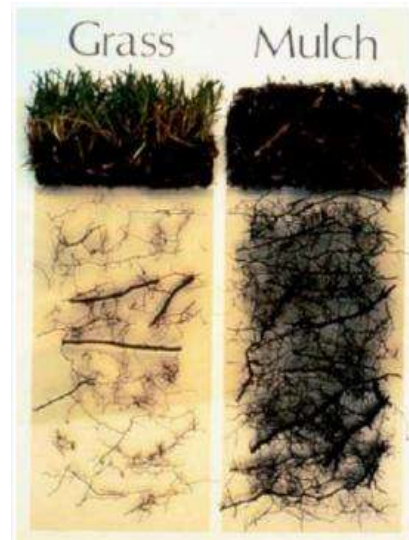


Figure 3: Example of root density under grass versus mulch.



Figure 4: Example of improper mulch application, known as "volcano mulch."

Root Collar Excavation

Excavating the root collar is necessary for trees whose buttress roots are covered by excess soil or mulch. Buried root collars can contribute to tree health problems, including girdling roots, basal cankers, and masking root and lower stem decay.

Figure 8 shows a buried root collar and Figure 9 shows an exposed root collar.



**Figure 5: No root flare is visible at this tree's base.
The root collar is buried.**



Figure 6: Example of exposed root collar.

Girdling Roots

Girdling roots (Figure 10) restrict water and nutrient movement throughout the tree. If left untreated they can cause the tree to decline, fail (Figure 11), and eventually die in severe cases. Girdling roots should be removed as soon as possible, unless removal will significantly impact the condition of the tree. In some cases, the presence of significant or severe girdling roots may cause the tree to be recommended for removal.



Figure 7: Examples of girdling roots.



Figure 8: Example of tree failure from girdling roots.

Integrated Pest Management

The Inventory Team also recommends an Integrated Pest Management (IPM) program for trees in the formal landscape. An IPM program monitors for potentially damaging insects, diseases and cultural problems that are often seasonal and may not have been evident during our inventory visit. These pests and diseases include, but are not limited to, the following:

- Anthracnose – on a variety of species
- Aphids – on a variety of species
- Bacterial Leaf Scorch – on oak and sycamore trees
- Bagworms – on a variety of tree species
- Boring Insects – on a variety of tree species
- Caterpillar Defoliators – on a variety of tree species, especially oak
- Gall Insects – on a variety of species
- Lacebugs – on a variety of species
- Suspected Phytophthora Root Rot and Canker – on a variety of tree species, especially beech species
- Scale Insects – on a variety of tree species, especially oak and maple
- Spider Mites – on a variety of tree species



Figure 9: Tree #392 with defoliating caterpillars present.

Structural

Selective pruning of live branches and stems to influence orientation, spacing, growth rate, strength of attachment, and ultimate size of branches and stems.

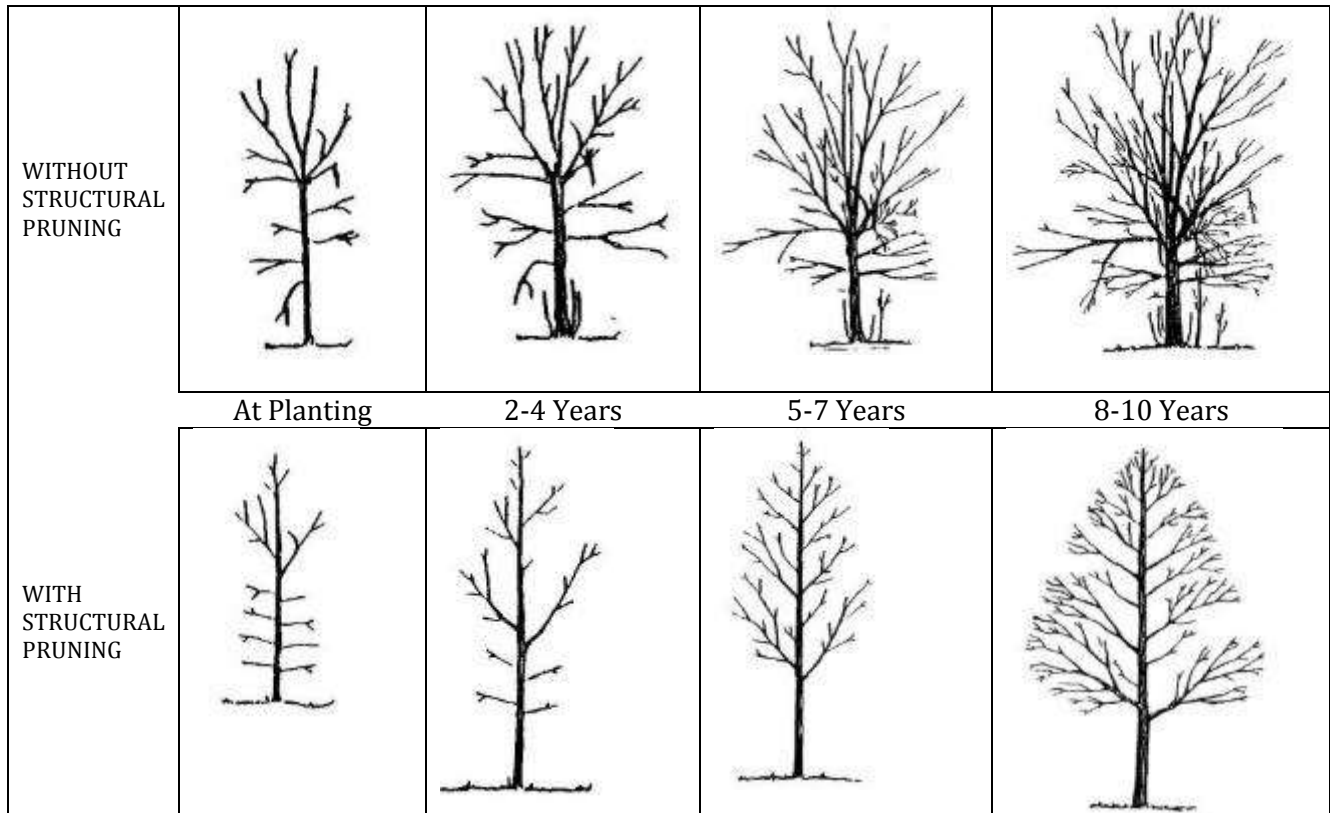


Figure 10: Illustration of structural pruning

We recommended pruning on the following trees:

Table 4: TREES RECOMMENDED FOR PRUNING (764 Trees)

Tree ID	Common Name	DBH	Risk Rating	Tree Work Priority	Clean	Raise	Reduce	Thin	Structural
549	Sycamore-American	10	Moderate	1	yes
604	Sycamore-American	16	Moderate	1	yes
620	Sycamore-American	14	Moderate	1	yes	yes
81	Maple-Red	10	Low	1	...	yes	yes
114	Zelkova-Japanese	11	Low	1	yes
592	Sycamore-American	11	Low	1	yes
597	Sycamore-American	12	Low	1	yes
101	Zelkova-Japanese	14	Low	2	...	yes
594	Maple-Red	7	Low	2	...	yes	yes
104	Zelkova-Japanese	10	Low	3	...	yes
121	Maple-Sugar	7	Low	3	...	yes	yes
477	Elm-Chinese	15	Low	4	...	yes	yes
1	Maple-Red	8	...	1	...	yes	yes
4	Maple-Red	5	...	1	...	yes	yes
5	Maple-Red	9	...	1	...	yes	yes
6	Maple-Red	8	...	1	...	yes	yes
9	Maple-Red	11	...	1	...	yes	yes
13	Maple-Red	7	...	1	...	yes	yes
16	Maple-Red	7	...	1	...	yes	yes
83	Maple-Red	9	...	1	...	yes	yes
84	Maple-Red	11	...	1	...	yes	yes
88	Maple-Red	12	...	1	...	yes	yes
90	Maple-Freeman's	11	...	1	...	yes	yes
112	Maple-Red	8	...	1	...	yes	yes
153	Maple-Freeman's	9	...	1	...	yes	yes

Tree ID	Common Name	DBH	Risk Rating	Tree Work Priority	Clean	Raise	Reduce	Thin	Structural
159	Maple-Red	8	...	1	...	yes	yes
161	Maple-Red	12	...	1	...	yes	yes
173	Oak-Pin	8	...	1	...	yes
186	Maple-Red	12	...	1	...	yes	yes
192	Maple-Red	8	...	1	...	yes	yes
247	Sycamore-American	11	...	1	yes	yes
275	Maple-Red	5	...	1	yes
332	Oak-Pin	12	...	1	...	yes
341	Oak-Pin	16	...	1	...	yes
343	Oak-Pin	14	...	1	...	yes	yes
349	Oak-Pin	13	...	1	...	yes	yes
350	Oak- Northern Red	13	...	1	...	yes	yes
358	Oak-Pin	13	...	1	...	yes	yes
367	Oak-Pin	14	...	1	...	yes	yes
371	Oak-Pin	12	...	1	...	yes
385	Oak-Pin	9	...	1	...	yes	yes
389	Oak-White	9	...	1	...	yes
390	Oak- Northern Red	7	...	1	...	yes
414	Sycamore-American	9	...	1	...	yes
415	Sycamore-American	9	...	1	yes	yes
417	Sycamore-American	10	...	1	yes
418	Sycamore-American	12	...	1	yes	yes
433	Elm-Chinese	12	...	1	yes	yes
434	Elm-Chinese	11	...	1	yes	yes
442	Maple-Freeman's	8	...	1	...	yes	yes
461	Elm-Chinese	9	...	1	...	yes
463	Elm-Chinese	10	...	1	...	yes
464	Elm-Chinese	7	...	1	...	yes

Tree ID	Common Name	DBH	Risk Rating	Tree Work Priority	Clean	Raise	Reduce	Thin	Structural
467	Elm-Chinese	15	...	1	yes	yes
480	Sycamore-American	12	...	1	yes
483	Elm-Chinese	10	...	1	...	yes
514	Sycamore-American	11	...	1	yes	yes
524	Sycamore-American	14	...	1	...	yes
525	Sycamore-American	12	...	1	yes	yes	yes
527	Sycamore-American	13	...	1	yes	yes
535	Sycamore-American	9	...	1	yes	yes
538	Sycamore-American	9	...	1	...	yes
539	Sycamore-American	10	...	1	yes	yes
540	Sycamore-American	13	...	1	...	yes
541	Sycamore-American	12	...	1	yes	yes
542	Sycamore-American	8	...	1	...	yes
551	Sycamore-American	12	...	1	...	yes
552	Sycamore-American	10	...	1	...	yes
553	Sycamore-American	13	...	1	yes	yes
554	Sycamore-American	13	...	1	...	yes
556	Elm-Chinese	14	...	1	...	yes
557	Sycamore-American	12	...	1	...	yes
580	Maple-Red	12	...	1	...	yes	yes
581	Maple-Red	14	...	1	...	yes	yes
582	Maple-Red	12	...	1	...	yes	yes
587	Maple-Red	12	...	1	...	yes	yes
590	Sycamore-American	13	...	1	yes	yes
595	Sycamore-American	13	...	1	yes	yes
599	Sycamore-American	10	...	1	yes
600	Sycamore-American	12	...	1	yes
601	Sycamore-American	12	...	1	...	yes

Tree ID	Common Name	DBH	Risk Rating	Tree Work Priority	Clean	Raise	Reduce	Thin	Structural
610	Sycamore-American	11	...	1	yes	yes
617	Maple-Red	8	...	1	...	yes	yes
637	Maple-Red	13	...	1	yes
686	Oak - Shumard	16	...	1	yes	yes
716	Maple-Red	13	...	1	...	yes	yes
723	Maple-Red	7	...	1	...	yes	yes
724	Maple-Red	7	...	1	...	yes	yes
738	Oak-Water	14	...	1	...	yes	yes
739	Oak-Water	17	...	1	...	yes	yes
740	Oak-Water	11	...	1	...	yes	yes
742	Oak-Water	12	...	1	...	yes	yes
760	Maple-Red	6	...	1	...	yes	yes
775	Sycamore-American	11	...	1	...	yes
776	Sycamore-American	12	...	1	yes	yes
779	Sycamore-American	14	...	1	yes	yes
780	Sycamore-American	10	...	1	...	yes
799	Sycamore-American	15	...	1	yes	yes
806	Sycamore-American	11	...	1	yes
809	Sycamore-American	12	...	1	yes	yes
813	Sycamore-American	8	...	1	...	yes
814	Sycamore-American	9	...	1	...	yes
830	Zelkova-Japanese	13	...	1	...	yes	yes
831	Zelkova-Japanese	17	...	1	...	yes	yes
835	Zelkova-Japanese	14	...	1	...	yes	yes
2	Maple-Red	8	...	2	...	yes	yes
7	Maple-Red	8	...	2	...	yes	yes
8	Maple-Red	9	...	2	...	yes	yes
14	Maple-Red	9	...	2	...	yes	yes

Tree ID	Common Name	DBH	Risk Rating	Tree Work Priority	Clean	Raise	Reduce	Thin	Structural
15	Maple-Red	11	...	2	...	yes	yes
18	Maple-Red	8	...	2	...	yes	yes
19	Maple-Silver	12	...	2	...	yes	yes
27	Maple-Red	13	...	2	...	yes
28	Maple-Red	13	...	2	...	yes	yes
29	Maple-Red	12	...	2	...	yes	yes
58	Oak-Pin	15	...	2	yes	yes
59	Maple-Red	13	...	2	...	yes	yes
67	Oak-Pin	11	...	2	yes	yes
73	Maple-Red	10	...	2	yes	yes
74	Maple-Red	16	...	2	yes	yes
76	Maple-Red	9	...	2	...	yes	yes
77	Maple-Red	14	...	2	...	yes
78	Maple-Freeman's	9	...	2	...	yes	yes
79	Maple-Red	11	...	2	...	yes	yes
80	Maple-Red	12	...	2	...	yes	yes
82	Maple-Red	12	...	2	...	yes	yes
86	Maple-Red	13	...	2	...	yes
96	Maple-Red	12	...	2	...	yes	yes
100	Sycamore-American	12	...	2	yes	yes
103	Zelkova-Japanese	11	...	2	...	yes
106	Zelkova-Japanese	10	...	2	...	yes	yes
108	Zelkova-Japanese	12	...	2	...	yes	yes
113	Zelkova-Japanese	10	...	2	...	yes
137	Maple-Red	8	...	2	yes	yes
149	Maple-Red	7	...	2	...	yes	yes
154	Maple-Red	8	...	2	...	yes	yes
155	Maple-Red	8	...	2	...	yes	yes

Tree ID	Common Name	DBH	Risk Rating	Tree Work Priority	Clean	Raise	Reduce	Thin	Structural
157	Maple-Red	8	...	2	...	yes	yes
160	Maple-Red	12	...	2	...	yes
162	Maple-Red	7	...	2	...	yes
163	Maple-Red	8	...	2	...	yes	yes
165	Maple-Red	12	...	2	...	yes	yes
167	Maple-Sugar	7	...	2	...	yes	yes
169	Maple-Red	8	...	2	...	yes	yes
170	Maple-Red	13	...	2	...	yes	yes
181	Oak-Water	10	...	2	...	yes	yes
182	Oak-Willow	11	...	2	...	yes	yes
187	Maple-Red	14	...	2	...	yes	yes
188	Maple-Sugar	8	...	2	...	yes	yes
190	Maple-Freeman's	7	...	2	...	yes	yes
197	Maple-Sugar	6	...	2	...	yes	yes
198	Maple-Red	6	...	2	...	yes	yes
201	Maple-Red	6	...	2	...	yes	yes
204	Maple-Sugar	11	...	2	...	yes	yes
210	Maple-Red	10	...	2	...	yes	yes
211	Maple-Red	9	...	2	...	yes	yes
216	Maple-Red	13	...	2	yes
218	Maple-Red	8	...	2	...	yes	yes
219	Maple-Freeman's	13	...	2	...	yes	yes
220	Maple-Red	8	...	2	...	yes	yes
230	Maple-Freeman's	7	...	2	...	yes	yes
232	Maple-Red	10	...	2	...	yes	yes
234	Maple-Red	12	...	2	...	yes	yes
235	Maple-Red	9	...	2	...	yes	yes
239	Maple-Red	9	...	2	...	yes	yes

Tree ID	Common Name	DBH	Risk Rating	Tree Work Priority	Clean	Raise	Reduce	Thin	Structural
240	Maple-Red	10	...	2	...	yes	yes
251	Maple-Freeman's	11	...	2	yes
252	Sycamore-American	12	...	2	yes
253	Sycamore-American	12	...	2	yes	yes
256	Maple-Freeman's	8	...	2	...	yes	yes
258	Maple-Freeman's	8	...	2	...	yes	yes
262	Maple-Freeman's	9	...	2	...	yes	yes
272	Maple-Red	12	...	2	...	yes	yes
276	Maple-Red	13	...	2	...	yes	yes
277	Maple-Red	11	...	2	...	yes	yes
280	Maple-Red	9	...	2	...	yes	yes
281	Maple-Red	8	...	2	...	yes	yes
285	Maple-Red	9	...	2	...	yes	yes
287	Maple-Red	10	...	2	...	yes	yes
288	Maple-Red	10	...	2	...	yes	yes
297	Maple-Red	10	...	2	...	yes	yes
302	Maple-Red	9	...	2	...	yes	yes
317	Maple-Red	9	...	2	...	yes	yes
323	Maple-Red	12	...	2	...	yes	yes
325	Maple-Red	10	...	2	yes	yes	yes
330	Maple-Red	7	...	2	...	yes
333	Oak-Pin	13	...	2	...	yes	yes
340	Oak-Pin	12	...	2	...	yes	yes
342	Oak-Pin	13	...	2	...	yes
344	Oak-Pin	10	...	2	...	yes	yes
351	Oak- Northern Red	12	...	2	...	yes	yes
353	Oak-Pin	16	...	2	...	yes
354	Oak-White	10	...	2	...	yes	yes

Tree ID	Common Name	DBH	Risk Rating	Tree Work Priority	Clean	Raise	Reduce	Thin	Structural
355	Oak-Pin	17	...	2	...	yes	yes
357	Oak- Northern Red	11	...	2	...	yes	yes
359	Oak- Northern Red	10	...	2	...	yes	yes
361	Oak-Pin	13	...	2	...	yes	yes
364	Oak-Pin	13	...	2	...	yes	yes
365	Oak-Pin	13	...	2	...	yes	yes
366	Oak-Pin	14	...	2	...	yes
368	Oak-Pin	15	...	2	...	yes	...	yes	...
373	Oak-Pin	13	...	2	...	yes	...	yes	...
374	Elm-Chinese	9	...	2	yes
378	Oak-Pin	10	...	2	...	yes
379	Oak-Pin	11	...	2	...	yes	yes
381	Oak- Northern Red	7	...	2	...	yes	yes
382	Oak- Northern Red	7	...	2	...	yes
384	Oak-Pin	11	...	2	...	yes	yes
391	Elm-Chinese	12	...	2	yes	...
394	Oak- Northern Red	5	...	2	...	yes
399	Maple-Red	9	...	2	...	yes	yes
409	Maple-Red	10	...	2	...	yes	yes
425	Elm-Chinese	12	...	2	...	yes
430	Elm-Chinese	9	...	2	...	yes
432	Elm-Chinese	9	...	2	...	yes
437	Maple-Red	6	...	2	...	yes	yes
440	Maple-Freeman's	9	...	2	...	yes	yes
441	Maple-Freeman's	10	...	2	...	yes	yes
445	Elm-Chinese	10	...	2	yes	yes
451	Elm-Chinese	8	...	2	...	yes	yes
456	Elm-Chinese	9	...	2	yes	yes

Tree ID	Common Name	DBH	Risk Rating	Tree Work Priority	Clean	Raise	Reduce	Thin	Structural
458	Elm-Chinese	7	...	2	...	yes
466	Elm-Chinese	12	...	2	yes	yes
468	Elm-Chinese	10	...	2	yes	yes
471	Elm-Chinese	16	...	2	yes	yes
479	Maple-Trident	4	...	2	yes
481	Oak-Overcup	9	...	2	...	yes	yes
482	Oak-Overcup	6	...	2	...	yes	yes
484	Oak-Overcup	8	...	2	...	yes
485	Oak-Post	6	...	2	...	yes
488	Oak-Post	9	...	2	...	yes
491	Maple-Red	10	...	2	yes
492	Oak-Post	8	...	2	...	yes
495	Oak-Overcup	11	...	2	...	yes	yes
497	Oak-Overcup	6	...	2	...	yes
501	Oak-Overcup	7	...	2	...	yes
503	Oak-Overcup	7	...	2	...	yes
505	Oak-Overcup	7	...	2	...	yes
509	Oak-Overcup	8	...	2	yes
511	Maple-Red	6	...	2	...	yes	yes
521	Sycamore-American	9	...	2	...	yes
528	Sycamore-American	15	...	2	...	yes
529	Sycamore-American	15	...	2	...	yes
530	Sycamore-American	15	...	2	...	yes
531	Sycamore-American	14	...	2	...	yes
532	Sycamore-American	14	...	2	...	yes
533	Sycamore-American	11	...	2	...	yes
534	Sycamore-American	11	...	2	...	yes
543	Sycamore-American	7	...	2	...	yes

Tree ID	Common Name	DBH	Risk Rating	Tree Work Priority	Clean	Raise	Reduce	Thin	Structural
544	Sycamore-American	10	...	2	yes	yes
545	Pistache-Chinese	4	...	2	...	yes	yes
546	Sycamore-American	10	...	2	yes
558	Sycamore-American	10	...	2	yes	yes
564	Maple-Red	13	...	2	yes
575	Sycamore-American	12	...	2	...	yes
576	Sycamore-American	11	...	2	...	yes
583	Maple-Red	8	...	2	...	yes	yes
598	Sycamore-American	12	...	2	yes	yes
602	Sycamore-American	10	...	2	...	yes
607	Sycamore-American	14	...	2	...	yes
609	Sycamore-American	12	...	2	yes	yes
611	Sycamore-American	13	...	2	...	yes
612	Sycamore-American	11	...	2	...	yes
613	Sycamore-American	9	...	2	yes	yes
618	Maple-Red	6	...	2	...	yes	yes
619	Maple-Red	6	...	2	...	yes	yes
627	Maple-Red	11	...	2	...	yes	yes
630	Maple-Red	12	...	2	...	yes
633	Maple-Red	12	...	2	...	yes	yes
645	Maple-Red	10	...	2	...	yes	yes
646	Maple-Red	10	...	2	...	yes	yes
648	Maple-Red	10	...	2	...	yes	yes
649	Maple-Red	8	...	2	...	yes	yes
650	Maple-Red	10	...	2	...	yes	yes
652	Maple-Red	14	...	2	yes
653	Maple-Red	12	...	2	yes
655	Maple-Red	9	...	2	...	yes	yes

Tree ID	Common Name	DBH	Risk Rating	Tree Work Priority	Clean	Raise	Reduce	Thin	Structural
656	Maple-Red	14	...	2	...	yes	yes
657	Maple-Red	10	...	2	...	yes	yes
658	Maple-Red	13	...	2	...	yes	yes
659	Maple-Silver	10	...	2	...	yes	yes
660	Maple-Red	12	...	2	...	yes	yes
669	Oak-Pin	14	...	2	...	yes	yes
671	Oak-Pin	18	...	2	...	yes	yes
674	Oak - Scarlet	9	...	2	...	yes	yes
680	Maple-Red	8	...	2	...	yes
692	Maple-Red	10	...	2	...	yes	yes
695	Maple-Red	13	...	2	...	yes	yes
696	Maple-Red	12	...	2	...	yes	yes
698	Maple-Red	10	...	2	...	yes	yes
700	Maple-Freeman's	12	...	2	...	yes	yes
706	Maple-Red	10	...	2	...	yes	yes
707	Maple-Red	6	...	2	yes	yes
714	Maple-Red	9	...	2	...	yes	yes
717	Maple-Freeman's	9	...	2	...	yes	yes
725	Maple-Red	8	...	2	yes	yes
727	Maple-Red	7	...	2	yes	yes
729	Maple-Red	9	...	2	yes
741	Oak-Water	14	...	2	...	yes	yes
743	Oak-Water	12	...	2	...	yes	yes
746	Oak-Water	11	...	2	...	yes	yes
747	Oak-Willow	14	...	2	...	yes	yes
750	Oak-Water	14	...	2	...	yes	yes
751	Oak-Willow	13	...	2	...	yes	yes
752	Oak-Water	14	...	2	...	yes	yes

Tree ID	Common Name	DBH	Risk Rating	Tree Work Priority	Clean	Raise	Reduce	Thin	Structural
753	Oak-Water	12	...	2	...	yes	yes
758	Maple-Red	9	...	2	yes	yes
763	Maple-Red	12	...	2	...	yes
765	Sycamore-American	10	...	2	...	yes	yes
766	Sycamore-American	10	...	2	...	yes	yes
767	Sycamore-American	8	...	2	...	yes
768	Sycamore-American	10	...	2	...	yes
769	Sycamore-American	9	...	2	...	yes
770	Sycamore-American	15	...	2	yes	yes
771	Sycamore-American	12	...	2	...	yes
773	Sycamore-American	7	...	2	...	yes
781	Sycamore-American	8	...	2	yes	yes
782	Sycamore-American	10	...	2	...	yes
783	Sycamore-American	9	...	2	...	yes
784	Sycamore-American	12	...	2	...	yes
787	Sycamore-American	9	...	2	yes	yes
789	Sycamore-American	8	...	2	...	yes
790	Sycamore-American	11	...	2	...	yes
794	Sycamore-American	11	...	2	...	yes
795	Sycamore-American	12	...	2	...	yes
796	Sycamore-American	14	...	2	yes
797	Sycamore-American	7	...	2	...	yes
800	Sycamore-American	9	...	2	...	yes
801	Sycamore-American	8	...	2	yes	yes
804	Sycamore-American	11	...	2	...	yes
810	Sycamore-American	8	...	2	...	yes
812	Sycamore-American	7	...	2	...	yes
815	Sycamore-American	9	...	2	...	yes

Tree ID	Common Name	DBH	Risk Rating	Tree Work Priority	Clean	Raise	Reduce	Thin	Structural
818	Sycamore-American	12	...	2	...	yes
819	Sycamore-American	11	...	2	...	yes
821	Zelkova-Japanese	10	...	2	...	yes	yes
822	Honeylocust-Thornless Common	14	...	2	yes	yes
824	Zelkova-Japanese	11	...	2	...	yes	yes
825	Zelkova-Japanese	14	...	2	yes	yes	yes
834	Maple-Sugar	7	...	2	...	yes	yes
836	Zelkova-Japanese	10	...	2	...	yes	yes
10	Maple-Red	5	...	3	yes
11	Maple-Red	6	...	3	yes	yes
17	Maple-Red	8	...	3	yes
20	Oak- Northern Red	7	...	3	yes
25	Oak-Pin	11	...	3	yes	yes
26	Oak-Pin	11	...	3	yes	yes
45	Maple-Red	10	...	3	...	yes	yes
48	Oak-Pin	15	...	3	yes	yes
56	Oak-Pin	14	...	3	yes
57	Oak-Pin	16	...	3	yes
60	Maple-Red	12	...	3	...	yes	yes
69	Oak-Pin	16	...	3	yes
70	Maple-Red	10	...	3	...	yes	yes
71	Maple-Red	12	...	3	...	yes	yes
75	Maple-Red	11	...	3	...	yes
85	Maple-Red	9	...	3	...	yes	yes
87	Maple-Red	10	...	3	yes
89	Maple-Sugar	8	...	3	yes
91	Maple-Red	9	...	3	...	yes	yes

Tree ID	Common Name	DBH	Risk Rating	Tree Work Priority	Clean	Raise	Reduce	Thin	Structural
95	Maple-Red	5	...	3	...	yes	yes
97	Zelkova-Japanese	4	...	3	yes
107	Maple-Red	6	...	3	...	yes	yes
109	Maple-Red	6	...	3	...	yes	yes
110	Maple-Red	6	...	3	...	yes	yes
115	Maple-Sugar	6	...	3	...	yes	yes
116	Maple-Sugar	7	...	3	...	yes	yes
120	Maple-Sugar	7	...	3	...	yes	yes
125	Maple-Red	8	...	3	...	yes	yes
127	Maple-Sugar	4	...	3	...	yes	yes
128	Maple-Freeman's	8	...	3	...	yes	yes
129	Maple-Silver	11	...	3	...	yes	yes
134	Maple-Red	5	...	3	...	yes	yes
138	Maple-Red	6	...	3	...	yes	yes
142	Maple-Red	7	...	3	...	yes	yes
143	Maple-Red	5	...	3	...	yes	yes
147	Maple-Red	5	...	3	...	yes	yes
152	Maple-Sugar	10	...	3	...	yes	yes
158	Maple-Freeman's	5	...	3	...	yes	yes
164	Maple-Sugar	7	...	3	...	yes	yes
166	Maple-Red	10	...	3	yes
168	Maple-Sugar	5	...	3	...	yes	yes
171	Maple-Sugar	8	...	3	...	yes	yes
172	Oak-Pin	14	...	3	...	yes	yes
176	Maple-Sugar	7	...	3	yes
178	Oak- Northern Red	13	...	3	...	yes	yes
180	Maple-Sugar	6	...	3	...	yes	yes
183	Maple-Sugar	6	...	3	...	yes	yes

Tree ID	Common Name	DBH	Risk Rating	Tree Work Priority	Clean	Raise	Reduce	Thin	Structural
184	Maple-Sugar	8	...	3	...	yes	yes
189	Maple-Sugar	9	...	3	...	yes	yes
195	Maple-Sugar	5	...	3	yes
196	Maple-Sugar	5	...	3	yes
202	Maple-Red	5	...	3	...	yes	yes
207	Maple-Red	8	...	3	...	yes	yes
209	Maple-Red	11	...	3	...	yes	yes
213	Maple-Red	8	...	3	...	yes	yes
214	Maple-Sugar	10	...	3	...	yes	yes
215	Maple-Red	7	...	3	...	yes	yes
217	Maple-Red	8	...	3	...	yes	yes
223	Maple-Red	7	...	3	yes
224	Maple-Red	8	...	3	...	yes	yes
226	Maple-Red	8	...	3	...	yes	yes
227	Maple-Freeman's	10	...	3	...	yes	yes
228	Maple-Sugar	5	...	3	yes
229	Maple-Freeman's	6	...	3	yes
233	Maple-Red	9	...	3	yes
236	Maple-Red	8	...	3	...	yes	yes
241	Maple-Red	10	...	3	yes
243	Maple-Freeman's	11	...	3	yes
244	Maple-Freeman's	9	...	3	yes
246	Sycamore-American	11	...	3	yes	yes
249	Sycamore-American	9	...	3	...	yes
250	Sycamore-American	9	...	3	...	yes
255	Maple-Freeman's	7	...	3	yes
260	Maple-Freeman's	8	...	3	yes
263	Maple-Red	12	...	3	...	yes	yes

Tree ID	Common Name	DBH	Risk Rating	Tree Work Priority	Clean	Raise	Reduce	Thin	Structural
265	Maple-Red	10	...	3	...	yes	yes
269	Maple-Red	12	...	3	...	yes	yes
270	Maple-Red	9	...	3	...	yes	yes
273	Maple-Red	13	...	3	...	yes	yes
274	Maple-Red	12	...	3	...	yes	yes
282	Maple-Red	8	...	3	...	yes	yes
283	Maple-Red	10	...	3	...	yes	yes
290	Maple-Red	10	...	3	...	yes	yes
292	Maple-Freeman's	11	...	3	...	yes	yes
293	Maple-Red	12	...	3	...	yes	yes
294	Maple-Red	11	...	3	...	yes	yes
296	Maple-Red	9	...	3	...	yes	yes
298	Maple-Red	8	...	3	yes
300	Maple-Red	10	...	3	...	yes	yes
301	Maple-Red	8	...	3	...	yes	yes
303	Maple-Red	9	...	3	...	yes	yes
306	Maple-Red	8	...	3	...	yes	yes
309	Maple-Red	10	...	3	yes
310	Maple-Red	8	...	3	...	yes	yes
311	Maple-Red	8	...	3	...	yes	yes
314	Maple-Red	8	...	3	...	yes	yes
315	Maple-Red	9	...	3	...	yes	yes
318	Maple-Red	10	...	3	...	yes	yes
322	Maple-Red	11	...	3	...	yes	yes
324	Maple-Red	12	...	3	...	yes	yes
327	Maple-Red	10	...	3	...	yes	yes
328	Oak- Northern Red	5	...	3	...	yes	yes
329	Maple-Red	7	...	3	yes

Tree ID	Common Name	DBH	Risk Rating	Tree Work Priority	Clean	Raise	Reduce	Thin	Structural
331	Oak- Northern Red	4	...	3	yes
334	Oak-Pin	10	...	3	yes
335	Oak-Pin	12	...	3	yes
338	Oak- Northern Red	5	...	3	yes
345	Oak-Pin	12	...	3	...	yes	yes
348	Oak-Pin	13	...	3	yes
352	Oak-Pin	14	...	3	yes
369	Oak-Pin	14	...	3	...	yes
370	Oak-Pin	13	...	3	...	yes	yes
375	Elm-Chinese	7	...	3	...	yes	yes
376	Maple-Red	11	...	3	yes
380	Oak- Northern Red	8	...	3	...	yes	yes
386	Oak- Northern Red	10	...	3	...	yes	yes
387	Oak- Northern Red	15	...	3	...	yes	yes
392	Oak- Northern Red	8	...	3	yes
393	Oak- Northern Red	8	...	3	yes
396	Maple-Red	10	...	3	...	yes	yes
397	Maple-Red	9	...	3	...	yes	yes
398	Maple-Red	9	...	3	...	yes	yes
400	Maple-Red	11	...	3	...	yes	yes
401	Maple-Red	13	...	3	...	yes	yes
403	Maple-Red	12	...	3	...	yes	yes
405	Maple-Red	10	...	3	...	yes	yes
406	Maple-Red	11	...	3	...	yes	yes
407	Maple-Red	9	...	3	...	yes	yes
411	Maple-Red	10	...	3	...	yes	yes
413	Elm-Chinese	13	...	3	yes	yes
416	Elm-Chinese	10	...	3	yes	...	yes

Tree ID	Common Name	DBH	Risk Rating	Tree Work Priority	Clean	Raise	Reduce	Thin	Structural
419	Elm-Chinese	11	...	3	yes	yes	yes
420	Elm-Chinese	13	...	3	yes	yes	yes
424	Sycamore-American	9	...	3	yes
431	Elm-Chinese	12	...	3	yes
435	Elm-Chinese	8	...	3	yes	yes
439	Elm-Chinese	8	...	3	...	yes
444	Elm-Chinese	10	...	3	yes	...	yes
453	Elm-Chinese	7	...	3	yes
457	Elm-Chinese	5	...	3	yes
459	Elm-Chinese	12	...	3	yes	yes
462	Elm-Chinese	11	...	3	yes	yes	yes
465	Elm-Chinese	10	...	3	yes	yes
470	Elm-Chinese	14	...	3	...	yes	yes
472	Elm-Chinese	11	...	3	yes	yes
475	Elm-Chinese	11	...	3	yes	yes
476	Elm-Chinese	14	...	3	yes	yes
478	Maple-Trident	4	...	3	yes
489	Oak-Overcup	9	...	3	...	yes
496	Maple-Red	6	...	3	yes
499	Oak-Overcup	6	...	3	...	yes
500	Maple-Red	5	...	3	...	yes	yes
502	Oak-Overcup	8	...	3	...	yes	yes
504	Oak-Overcup	8	...	3	...	yes	yes
506	Maple-Sugar	5	...	3	...	yes	yes
510	Maple-Red	8	...	3	...	yes	yes
512	Elm-Chinese	13	...	3	yes	yes
537	Sycamore-American	11	...	3	yes	yes
565	Maple-Red	16	...	3	yes

Tree ID	Common Name	DBH	Risk Rating	Tree Work Priority	Clean	Raise	Reduce	Thin	Structural
570	Maple-Red	7	...	3	yes
572	Maple-Red	10	...	3	yes
573	Maple-Red	12	...	3	...	yes	yes
574	Maple-Red	14	...	3	...	yes	yes
578	Maple-Red	19	...	3	yes
579	Maple-Sugar	10	...	3	yes
585	Maple-Red	14	...	3	yes
588	Maple-Red	14	...	3	yes
593	Maple-Red	9	...	3	...	yes	yes
596	Sycamore-American	13	...	3	...	yes
603	Zelkova-Japanese	12	...	3	...	yes
606	Sycamore-American	8	...	3	...	yes
614	Sycamore-American	17	...	3	yes
615	Sycamore-American	13	...	3	yes
621	Sycamore-American	13	...	3	...	yes
622	Maple-Red	15	...	3	...	yes	yes
623	Maple-Red	14	...	3	...	yes	yes
624	Maple-Red	11	...	3	...	yes	yes
625	Maple-Red	10	...	3	...	yes	yes
629	Maple-Red	12	...	3	...	yes	yes
631	Maple-Red	9	...	3	...	yes	yes
632	Maple-Red	10	...	3	...	yes	yes
634	Maple-Red	16	...	3	...	yes
636	Maple-Red	9	...	3	...	yes	yes
639	Maple-Red	14	...	3	...	yes	yes
641	Maple-Red	14	...	3	...	yes	yes
643	Maple-Red	15	...	3	...	yes
651	Maple-Red	11	...	3	...	yes	yes

Tree ID	Common Name	DBH	Risk Rating	Tree Work Priority	Clean	Raise	Reduce	Thin	Structural
662	Oak-Pin	14	...	3	...	yes	yes
663	Oak-Pin	17	...	3	...	yes	yes
665	Oak-Pin	14	...	3	yes
666	Oak-Pin	15	...	3	...	yes	yes
668	Oak-Pin	14	...	3	...	yes	yes
670	Oak-Pin	15	...	3	...	yes	yes
673	Oak - Scarlet	13	...	3	...	yes	yes
676	Oak - Scarlet	11	...	3	...	yes	yes
678	Oak- Northern Red	9	...	3	yes
681	Maple-Red	8	...	3	yes
683	Maple-Red	5	...	3	yes
684	Oak - Shumard	13	...	3	yes
685	Oak - Shumard	13	...	3	yes
689	Maple-Red	12	...	3	yes
690	Maple-Red	4	...	3	...	yes
694	Maple-Red	11	...	3	yes
697	Maple-Freeman's	9	...	3	yes
699	Maple-Red	9	...	3	...	yes	yes
702	Maple-Red	11	...	3	...	yes	yes
703	Maple-Red	7	...	3	...	yes	yes
704	Oak-Overcup	8	...	3	...	yes	yes
705	Maple-Red	7	...	3	...	yes	yes
708	Maple-Red	9	...	3	...	yes	yes
709	Maple-Red	11	...	3	...	yes	yes
710	Maple-Red	9	...	3	yes
712	Maple-Red	9	...	3	yes
713	Maple-Red	8	...	3	yes
718	Maple-Sugar	8	...	3	yes

Tree ID	Common Name	DBH	Risk Rating	Tree Work Priority	Clean	Raise	Reduce	Thin	Structural
719	Maple-Freeman's	9	...	3	...	yes	yes
720	Sycamore-American	10	...	3	yes	yes
722	Maple-Red	7	...	3	...	yes
726	Maple-Red	7	...	3	yes
728	Maple-Red	8	...	3	...	yes	yes
732	Maple-Red	7	...	3	yes	yes
736	Oak-Water	12	...	3	...	yes	yes
737	Oak-Water	17	...	3	...	yes	yes
745	Oak-Water	14	...	3	...	yes	yes
749	Oak-Water	14	...	3	...	yes	yes
757	Maple-Sugar	6	...	3	yes
761	Maple-Freeman's	5	...	3	...	yes	yes
762	Oak- Northern Red	11	...	3	...	yes
774	Sycamore-American	9	...	3	yes	yes
777	Sycamore-American	8	...	3	...	yes
778	Sycamore-American	12	...	3	...	yes
788	Maple-Red	11	...	3	...	yes	yes
798	Sycamore-American	12	...	3	yes
802	Sycamore-American	8	...	3	...	yes
803	Sycamore-American	10	...	3	...	yes
805	Sycamore-American	12	...	3	...	yes
807	Sycamore-American	6	...	3	...	yes
808	Sycamore-American	10	...	3	...	yes
811	Sycamore-American	7	...	3	...	yes
816	Sycamore-American	13	...	3	...	yes	yes
820	Zelkova-Japanese	13	...	3	yes
826	Zelkova-Japanese	15	...	3	yes
828	Honeylocust-Thornless	9	...	3	...	yes	yes

Tree ID	Common Name	DBH	Risk Rating	Tree Work Priority	Clean	Raise	Reduce	Thin	Structural
	Common								
829	Zelkova-Japanese	12	...	3	yes
832	Zelkova-Japanese	11	...	3	yes
833	Maple-Freeman's	7	...	3	...	yes	yes
12	Maple-Red	8	...	4	yes
23	Oak-Pin	13	...	4	yes	yes
24	Oak-Pin	14	...	4	yes
31	Oak-Pin	17	...	4	yes	yes
32	Oak-Pin	14	...	4	yes
33	Oak-Pin	16	...	4	yes
34	Oak-Pin	13	...	4	yes
35	Oak-Pin	14	...	4	yes
36	Oak-Pin	14	...	4	yes	yes
37	Oak-Pin	15	...	4	yes
38	Oak-Pin	12	...	4	yes
39	Oak-Pin	13	...	4	yes	yes
40	Oak-Pin	13	...	4	yes
41	Oak-Pin	14	...	4	yes
44	Maple-Red	10	...	4	yes
46	Oak-Pin	16	...	4	yes	yes
49	Oak-Pin	10	...	4	yes
50	Oak-Pin	13	...	4	yes
52	Oak-Pin	14	...	4	yes
53	Oak-Pin	15	...	4	yes	yes
54	Oak-Pin	17	...	4	yes
55	Oak-Pin	14	...	4	yes	yes
61	Oak-Pin	16	...	4	yes
62	Oak-Pin	13	...	4	yes

Tree ID	Common Name	DBH	Risk Rating	Tree Work Priority	Clean	Raise	Reduce	Thin	Structural
63	Oak-Pin	13	...	4	yes	yes
64	Oak-Pin	12	...	4	yes	yes
65	Oak-Pin	12	...	4	yes
66	Oak-Pin	14	...	4	yes
68	Oak-Pin	11	...	4	yes
92	Maple-Red	2	...	4	yes
93	Maple-Red	3	...	4	yes
94	Maple-Red	2	...	4	yes
102	Zelkova-Japanese	12	...	4	yes
105	Zelkova-Japanese	12	...	4	yes
111	Zelkova-Japanese	12	...	4	yes
117	Maple-Sugar	2	...	4	yes
118	Maple-Sugar	6	...	4	...	yes	yes
119	Maple-Sugar	7	...	4	...	yes	yes
122	Maple-Sugar	5	...	4	yes
123	Maple-Sugar	2	...	4	yes
124	Maple-Sugar	2	...	4	yes
126	Maple-Sugar	9	...	4	yes
131	Maple-Sugar	4	...	4	yes
132	Maple-Red	7	...	4	yes
135	Maple-Sugar	8	...	4	...	yes	yes
136	Maple-Sugar	4	...	4	...	yes	yes
139	Maple-Red	6	...	4	yes
144	Maple-Sugar	11	...	4	yes
145	Maple-Sugar	5	...	4	yes
146	Maple-Sugar	5	...	4	yes
148	Maple-Sugar	9	...	4	yes
150	Maple-Sugar	4	...	4	yes

Tree ID	Common Name	DBH	Risk Rating	Tree Work Priority	Clean	Raise	Reduce	Thin	Structural
151	Maple-Sugar	10	...	4	yes
156	Maple-Sugar	7	...	4	...	yes	yes
174	Maple-Sugar	7	...	4	yes
175	Maple-Red	2	...	4	yes
177	Maple-Red	2	...	4	yes
179	Oak - Scarlet	9	...	4	...	yes
185	Maple-Sugar	6	...	4	...	yes	yes
191	Maple-Sugar	3	...	4	yes
199	Maple-Sugar	4	...	4	yes
200	Maple-Sugar	4	...	4	yes
203	Maple-Sugar	10	...	4	...	yes	yes
205	Maple-Sugar	7	...	4	yes
206	Maple-Sugar	10	...	4	...	yes	yes
208	Maple-Red	8	...	4	...	yes	yes
221	Maple-...rway	6	...	4	yes
222	Maple-Sugar	6	...	4	yes
225	Maple-Red	11	...	4	...	yes	yes
231	Maple-Red	11	...	4	yes
237	Maple-Red	11	...	4	...	yes	yes
238	Maple-Red	10	...	4	yes
242	Maple-Red	10	...	4	yes
245	Maple-Freeman's	9	...	4	yes
248	Maple-Freeman's	4	...	4	yes
254	Maple-Freeman's	6	...	4	yes
257	Maple-Freeman's	6	...	4	yes
259	Maple-Freeman's	6	...	4	yes
261	Maple-Red	8	...	4	yes
266	Maple-Red	11	...	4	...	yes	yes

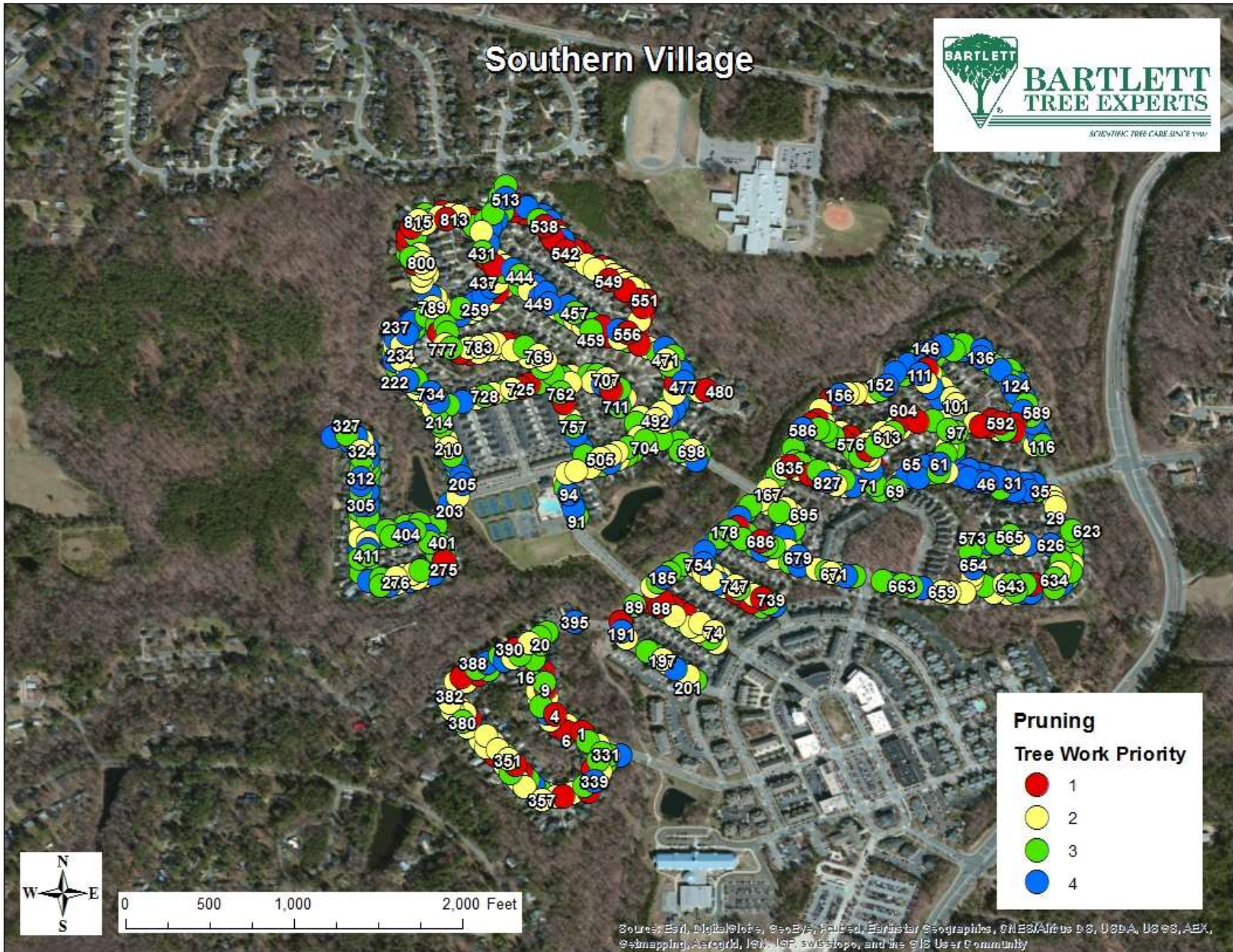
Tree ID	Common Name	DBH	Risk Rating	Tree Work Priority	Clean	Raise	Reduce	Thin	Structural
267	Maple-Red	10	...	4	...	yes	yes
268	Maple-Red	10	...	4	...	yes	yes
278	Maple-Red	10	...	4	...	yes	yes
284	Maple-Red	9	...	4	...	yes	yes
286	Maple-Red	9	...	4	...	yes	yes
289	Maple-Red	10	...	4	yes
291	Maple-Red	7	...	4	yes
295	Maple-Red	11	...	4	...	yes	yes
299	Maple-Red	8	...	4	...	yes	yes
304	Maple-Red	11	...	4	...	yes	yes
305	Maple-Red	10	...	4	yes
307	Maple-Red	7	...	4	...	yes	yes
308	Maple-Red	11	...	4	...	yes	yes
312	Maple-Red	6	...	4	yes
313	Maple-Red	10	...	4	yes
316	Maple-Red	7	...	4	yes
319	Maple-Red	7	...	4	...	yes	yes
320	Maple-Red	11	...	4	...	yes	yes
321	Maple-Red	11	...	4	...	yes	yes
326	Maple-Red	11	...	4	...	yes	yes
336	Maple-Red	7	...	4	yes
339	Oak- Northern Red	6	...	4	yes
346	Oak-Pin	12	...	4	yes
372	Oak- Northern Red	5	...	4	yes
388	Oak- Northern Red	12	...	4	yes	...
395	Oak- Northern Red	8	...	4	yes
402	Maple-Red	11	...	4	...	yes	yes
404	Maple-Red	13	...	4	...	yes	yes

Tree ID	Common Name	DBH	Risk Rating	Tree Work Priority	Clean	Raise	Reduce	Thin	Structural
408	Maple-Red	9	...	4	...	yes	yes
410	Maple-Red	10	...	4	yes
412	Elm-Chinese	8	...	4	yes	yes	yes
421	Elm-Chinese	10	...	4	yes	...	yes
422	Elm-Chinese	10	...	4	yes
426	Elm-Chinese	9	...	4	...	yes	yes
427	Elm-Chinese	10	...	4	yes
429	Elm-Chinese	9	...	4	yes
436	Maple-Freeman's	8	...	4	yes
438	Maple-Red	5	...	4	yes
443	Elm-Chinese	10	...	4	yes	...	yes
446	Elm-Chinese	9	...	4	yes	...	yes
447	Elm-Chinese	10	...	4	yes
448	Elm-Chinese	9	...	4	yes	...	yes
449	Elm-Chinese	4	...	4	...	yes	yes
450	Elm-Chinese	10	...	4	yes	...	yes
455	Elm-Chinese	12	...	4	yes	yes	yes
460	Elm-Chinese	11	...	4	yes	...	yes
469	Elm-Chinese	12	...	4	...	yes	yes
473	Elm-Chinese	12	...	4	...	yes	yes
474	Elm-Chinese	14	...	4	...	yes	yes
487	Oak-Overcup	9	...	4	...	yes	yes
490	Oak-Overcup	10	...	4	...	yes	yes
493	Oak-Overcup	7	...	4	...	yes	yes
498	Oak-Overcup	5	...	4	...	yes
507	Maple-Sugar	8	...	4	yes
508	Oak-Overcup	6	...	4	...	yes	yes
513	Elm-Chinese	13	...	4	yes	yes	yes

Tree ID	Common Name	DBH	Risk Rating	Tree Work Priority	Clean	Raise	Reduce	Thin	Structural
517	Sycamore-American	12	...	4	yes
518	Sycamore-American	11	...	4	...	yes	yes
522	Sycamore-American	9	...	4	...	yes
555	Elm-Chinese	13	...	4	yes	...	yes
562	Maple-Red	11	...	4	yes
567	Maple-Red	11	...	4	yes
571	Maple-Red	11	...	4	yes
577	Maple-Freeman's	4	...	4	yes
586	Maple-Sugar	10	...	4	yes
589	Maple-Sugar	4	...	4	yes
616	Maple-Red	6	...	4	...	yes	yes
626	Maple-Red	12	...	4	...	yes	yes
628	Maple-Red	8	...	4	...	yes	yes
635	Maple-Red	9	...	4	...	yes	yes
638	Maple-Red	10	...	4	...	yes	yes
642	Maple-Red	9	...	4	...	yes	yes
654	Maple-Red	14	...	4	yes
661	Oak-Pin	13	...	4	yes	yes
664	Oak-Pin	13	...	4	yes	yes
667	Oak-Pin	18	...	4	...	yes	yes
672	Oak - Scarlet	6	...	4	...	yes	yes
675	Oak- Northern Red	7	...	4	yes
679	Oak - Shumard	11	...	4	yes
682	Maple-Red	6	...	4	yes
688	Maple-Red	5	...	4	yes
691	Maple-Red	10	...	4	yes
693	Maple-Red	7	...	4	yes
701	Maple-Red	8	...	4	yes

Tree ID	Common Name	DBH	Risk Rating	Tree Work Priority	Clean	Raise	Reduce	Thin	Structural
711	Maple-Red	9	...	4	yes
715	Maple-Red	8	...	4	yes
731	Maple-Red	6	...	4	yes
733	Maple-Sugar	6	...	4	yes
734	Maple-Sugar	6	...	4	yes
735	Oak-Overcup	7	...	4	...	yes	yes
748	Oak-Willow	13	...	4	yes
754	Oak-Willow	12	...	4	...	yes	yes
755	Maple-Sugar	9	...	4	yes
756	Maple-Sugar	6	...	4	yes
793	Sycamore-American	12	...	4	...	yes
823	Zelkova-Japanese	12	...	4	yes
827	Zelkova-Japanese	5	...	4	yes

Map 1: TREES BY WORK PRIORITY



Tree Removal

In some cases, the inspector may determine need for removal while assessing the tree. Trees may be recommended for removal during the inventory for several reasons:

- The tree is dead
- The tree is in poor condition and thought to be beyond rehabilitation
- The tree is over-mature and will continue to decline in condition
- The tree has significant structural weaknesses that cannot be addressed
- The tree is already or will interfere with infrastructure (overhead lines for example)
- The location value for the tree is poor or unacceptable (for example, large maturing tree growing directly under overhead lines)
- The tree species has been declared an invasive for the given area or region



Figure 11: Tree #3 at 603 Aberdeen Drive is recommended for Removal because it has severe girdling roots

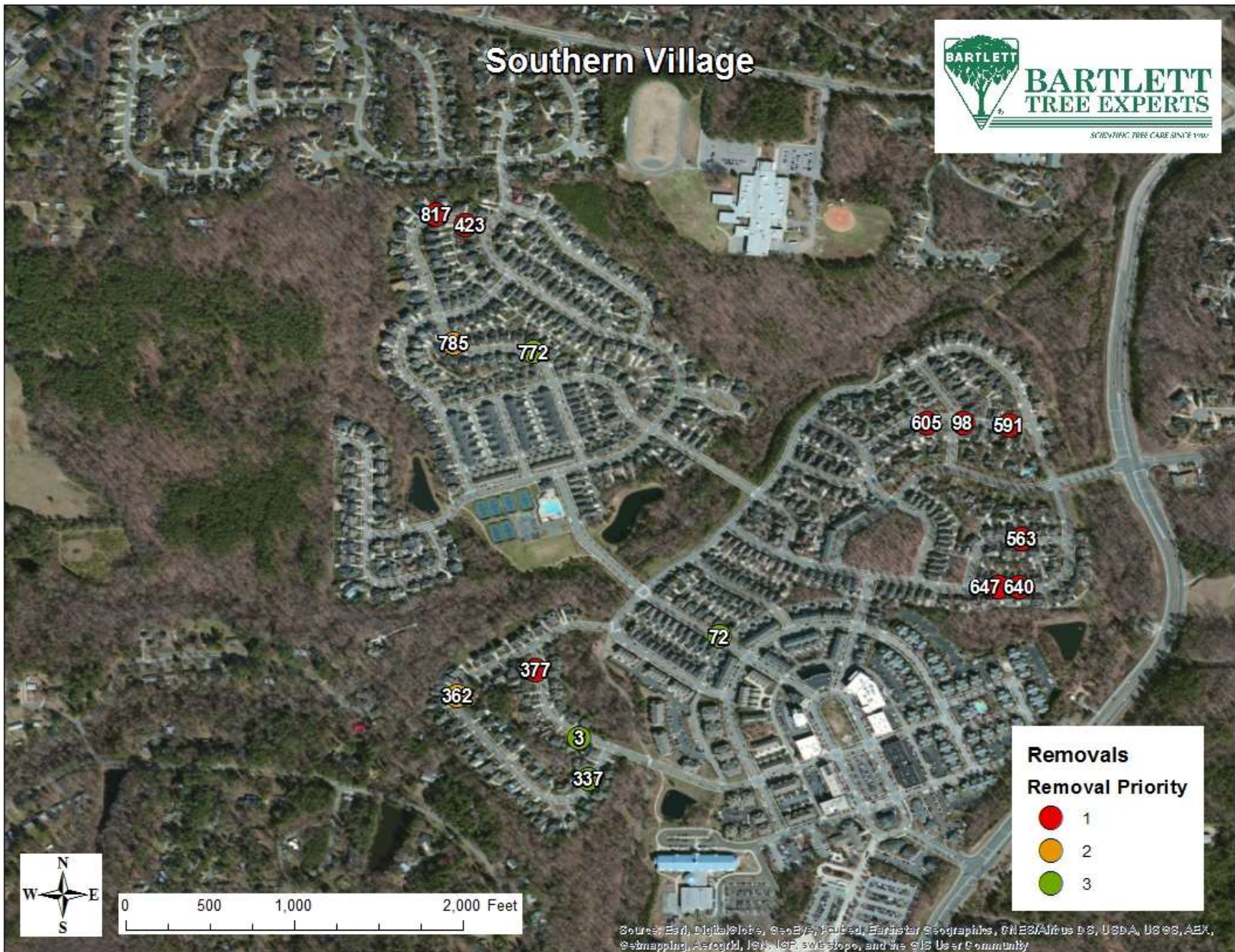
The trees listed in Table 14 are recommended for removal.

Table 5: TREE RECOMMENDED FOR REMOVAL (15 Trees)

Tree ID	Common Name	DBH	Condition	Tree Work Priority	Risk	Condition or Defect	Condition or Defect
591	Sycamore-American	8	Poor	1	Low	Deadwood >2	...
605	Sycamore-American	11	Poor	1	Low	Deadwood >2	...
640	Maple-Red	15	Fair	1	Low	Wound-stem	...
3	Maple-Red	9	Poor	3	Low	Wound-root flare	Girdling roots present (severe)

Tree ID	Common Name	DBH	Condition	Tree Work Priority	Risk	Condition or Defect	Condition or Defect
72	Maple-Red	12	Poor	3	Low	Girdling roots present (severe)	Codominant leaders
98	Sycamore-American	8	Poor	1
377	Maple-Red	5	Dead	1
423	Sycamore-American	9	Dead	1
563	Maple-Red	13	Fair	1	...	Girdling roots present (severe)	...
647	Maple-Red	11	Poor	1	...	Wound-stem	Cavity-stem
817	Sycamore-American	11	Poor	1
362	Oak- Northern Red	8	Poor	2
785	Sycamore-American	8	Poor	2
337	Oak- Northern Red	7	Poor	3	...	Suspected	...
772	Sycamore-American	10	Poor	3

Map 2: TREES RECOMMENDED FOR REMOVAL



The trees listed in Table 18 below met the conditions for *advanced assessments* (Level 3).

Table 6: TREE RECOMMENDED FOR ADVANCED ASSESSMENTS (LEVEL 3) (4 Trees)

Tree ID	Common Name	DBH	Tree Work Priority	Risk Rating	Advanced Assessment Root	Condition or Defect	Condition or Defect
101	Zelkova-Japanese	14	2	Low	Yes	Wound-stem	Girdling Roots Suspected
114	Zelkova-Japanese	11	1	Low	Yes	Wound-stem	Girdling Roots Suspected
121	Maple-Sugar	7	3	Low	Yes	Girdling Roots Suspected	Lean
594	Maple-Red	7	2	Low	Yes	Fungi/conks	...

ADDRESS TABLE

Table 7: ADDRESSES ASSOCIATED WITH TREE ID

Tree ID	Number	Street	Common Name	DBH
1	600	Aberdeen Drive	Maple-Red	8
2	602	Aberdeen Drive	Maple-Red	8
3	603	Aberdeen Drive	Maple-Red	9
4	604	Aberdeen Drive	Maple-Red	5
5	605	Aberdeen Drive	Maple-Red	9
6	605	Aberdeen Drive	Maple-Red	8
7	606	Aberdeen Drive	Maple-Red	8
8	607	Aberdeen Drive	Maple-Red	9
9	608	Aberdeen Drive	Maple-Red	11
10	608	Aberdeen Drive	Maple-Red	5
11	609	Aberdeen Drive	Maple-Red	6
12	609	Aberdeen Drive	Maple-Red	8
13	610	Aberdeen Drive	Maple-Red	7
14	611	Aberdeen Drive	Maple-Red	9
15	612	Aberdeen Drive	Maple-Red	11
16	613	Aberdeen Drive	Maple-Red	7
17	613	Aberdeen Drive	Maple-Red	8
18	613	Aberdeen Drive	Maple-Red	8
19	614	Aberdeen Drive	Maple-Silver	12
20	614	Aberdeen Drive	Oak- Northern Red	7
21	100	Arlen Park Drive	Maple-Red	15
22	100	Arlen Park Drive	Maple-Red	12
23	100	Arlen Park Drive	Oak-Pin	13
24	100	Arlen Park Drive	Oak-Pin	14
25	100	Arlen Park Drive	Oak-Pin	11

Tree ID	Number	Street	Common Name	DBH
26	101	Arlen Park Drive	Oak-Pin	11
27	101	Arlen Park Drive	Maple-Red	13
28	101	Arlen Park Drive	Maple-Red	13
29	101	Arlen Park Drive	Maple-Red	12
30	101	Arlen Park Drive	Maple-Red	11
31	102	Arlen Park Drive	Oak-Pin	17
32	102	Arlen Park Drive	Oak-Pin	14
33	102	Arlen Park Drive	Oak-Pin	16
34	103	Arlen Park Drive	Oak-Pin	13
35	103	Arlen Park Drive	Oak-Pin	14
36	104	Arlen Park Drive	Oak-Pin	14
37	104	Arlen Park Drive	Oak-Pin	15
38	104	Arlen Park Drive	Oak-Pin	12
39	105	Arlen Park Drive	Oak-Pin	13
40	105	Arlen Park Drive	Oak-Pin	13
41	106	Arlen Park Drive	Oak-Pin	14
42	106	Arlen Park Drive	Oak-Pin	14
43	106	Arlen Park Drive	Oak-Pin	16
44	106	Arlen Park Drive	Maple-Red	10
45	106	Arlen Park Drive	Maple-Red	10
46	107	Arlen Park Drive	Oak-Pin	16
47	107	Arlen Park Drive	Oak-Pin	13
48	107	Arlen Park Drive	Oak-Pin	15
49	109	Arlen Park Drive	Oak-Pin	10
50	109	Arlen Park Drive	Oak-Pin	13
51	111	Arlen Park Drive	Oak-Pin	12
52	111	Arlen Park Drive	Oak-Pin	14
53	111	Arlen Park Drive	Oak-Pin	15

Tree ID	Number	Street	Common Name	DBH
54	113	Arlen Park Drive	Oak-Pin	17
55	113	Arlen Park Drive	Oak-Pin	14
56	113	Arlen Park Drive	Oak-Pin	14
57	113	Arlen Park Drive	Oak-Pin	16
58	113	Arlen Park Drive	Oak-Pin	15
59	200	Arlen Park Drive	Maple-Red	13
60	200	Arlen Park Drive	Maple-Red	12
61	200	Arlen Park Drive	Oak-Pin	16
62	200	Arlen Park Drive	Oak-Pin	13
63	202	Arlen Park Drive	Oak-Pin	13
64	202	Arlen Park Drive	Oak-Pin	12
65	204	Arlen Park Drive	Oak-Pin	12
66	204	Arlen Park Drive	Oak-Pin	14
67	204	Arlen Park Drive	Oak-Pin	11
68	206	Arlen Park Drive	Oak-Pin	11
69	206	Arlen Park Drive	Oak-Pin	16
70	206	Arlen Park Drive	Maple-Red	10
71	206	Arlen Park Drive	Maple-Red	12
72	400	Brookgreen Drive	Maple-Red	12
73	401	Brookgreen Drive	Maple-Red	10
74	402	Brookgreen Drive	Maple-Red	16
75	403	Brookgreen Drive	Maple-Red	11
76	404	Brookgreen Drive	Maple-Red	9
77	404	Brookgreen Drive	Maple-Red	14
78	405	Brookgreen Drive	Maple-Freeman's	9
79	406	Brookgreen Drive	Maple-Red	11
80	407	Brookgreen Drive	Maple-Red	12
81	408	Brookgreen Drive	Maple-Red	10

Tree ID	Number	Street	Common Name	DBH
82	409	Brookgreen Drive	Maple-Red	12
83	410	Brookgreen Drive	Maple-Red	9
84	410	Brookgreen Drive	Maple-Red	11
85	411	Brookgreen Drive	Maple-Red	9
86	413	Brookgreen Drive	Maple-Red	13
87	415	Brookgreen Drive	Maple-Red	10
88	417	Brookgreen Drive	Maple-Red	12
89	419	Brookgreen Drive	Maple-Sugar	8
90	419	Brookgreen Drive	Maple-Freeman's	11
91	600	Brookgreen Drive	Maple-Red	9
92	602	Brookgreen Drive	Maple-Red	2
93	604	Brookgreen Drive	Maple-Red	3
94	606	Brookgreen Drive	Maple-Red	2
95	608	Brookgreen Drive	Maple-Red	5
96	610	Brookgreen Drive	Maple-Red	12
97	102	Calderon Drive	Zelkova-Japanese	4
98	102	Calderon Drive	Sycamore-American	8
99	102	Calderon Drive	Pistache-Chinese	3
100	102	Calderon Drive	Sycamore-American	12
101	200	Calderon Drive	Zelkova-Japanese	14
102	201	Calderon Drive	Zelkova-Japanese	12
103	202	Calderon Drive	Zelkova-Japanese	11
104	202	Calderon Drive	Zelkova-Japanese	10
105	203	Calderon Drive	Zelkova-Japanese	12
106	204	Calderon Drive	Zelkova-Japanese	10
107	204	Calderon Drive	Maple-Red	6
108	205	Calderon Drive	Zelkova-Japanese	12
109	206	Calderon Drive	Maple-Red	6

Tree ID	Number	Street	Common Name	DBH
110	207	Calderon Drive	Maple-Red	6
111	207	Calderon Drive	Zelkova-Japanese	12
112	207	Calderon Drive	Maple-Red	8
113	208	Calderon Drive	Zelkova-Japanese	10
114	208	Calderon Drive	Zelkova-Japanese	11
115	208	Calderon Drive	Maple-Sugar	6
116	102	Edgewater Circle	Maple-Sugar	7
117	102	Edgewater Circle	Maple-Sugar	2
118	104	Edgewater Circle	Maple-Sugar	6
119	104	Edgewater Circle	Maple-Sugar	7
120	200	Edgewater Circle	Maple-Sugar	7
121	200	Edgewater Circle	Maple-Sugar	7
122	202	Edgewater Circle	Maple-Sugar	5
123	203	Edgewater Circle	Maple-Sugar	2
124	203	Edgewater Circle	Maple-Sugar	2
125	203	Edgewater Circle	Maple-Red	8
126	204	Edgewater Circle	Maple-Sugar	9
127	205	Edgewater Circle	Maple-Sugar	4
128	206	Edgewater Circle	Maple-Freeman's	8
129	206	Edgewater Circle	Maple-Silver	11
130	206	Edgewater Circle	Maple-Red	1
131	207	Edgewater Circle	Maple-Sugar	4
132	207	Edgewater Circle	Maple-Red	7
133	208	Edgewater Circle	Maple-Sugar	2
134	209	Edgewater Circle	Maple-Red	5
135	210	Edgewater Circle	Maple-Sugar	8
136	211	Edgewater Circle	Maple-Sugar	4
137	211	Edgewater Circle	Maple-Red	8

Tree ID	Number	Street	Common Name	DBH
138	213	Edgewater Circle	Maple-Red	6
139	213	Edgewater Circle	Maple-Red	6
140	213	Edgewater Circle	Maple-Sugar	4
141	214	Edgewater Circle	Maple-Sugar	2
142	216	Edgewater Circle	Maple-Red	7
143	218	Edgewater Circle	Maple-Red	5
144	220	Edgewater Circle	Maple-Sugar	11
145	224	Edgewater Circle	Maple-Sugar	5
146	224	Edgewater Circle	Maple-Sugar	5
147	226	Edgewater Circle	Maple-Red	5
148	300	Edgewater Circle	Maple-Sugar	9
149	302	Edgewater Circle	Maple-Red	7
150	303	Edgewater Circle	Maple-Sugar	4
151	304	Edgewater Circle	Maple-Sugar	10
152	305	Edgewater Circle	Maple-Sugar	10
153	307	Edgewater Circle	Maple-Freeman's	9
154	307	Edgewater Circle	Maple-Red	8
155	309	Edgewater Circle	Maple-Red	8
156	311	Edgewater Circle	Maple-Sugar	7
157	311	Edgewater Circle	Maple-Red	8
158	313	Edgewater Circle	Maple-Freeman's	5
159	313	Edgewater Circle	Maple-Red	8
160	315	Edgewater Circle	Maple-Red	12
161	315	Edgewater Circle	Maple-Red	12
162	315	Edgewater Circle	Maple-Red	7
163	503	Edgewater Circle	Maple-Red	8
164	503	Edgewater Circle	Maple-Sugar	7
165	505	Edgewater Circle	Maple-Red	12

Tree ID	Number	Street	Common Name	DBH
166	505	Edgewater Circle	Maple-Red	10
167	505	Edgewater Circle	Maple-Sugar	7
168	601	Edgewater Circle	Maple-Sugar	5
169	601	Edgewater Circle	Maple-Red	8
170	601	Edgewater Circle	Maple-Red	13
171	603	Edgewater Circle	Maple-Sugar	8
172	605	Edgewater Circle	Oak-Pin	14
173	605	Edgewater Circle	Oak-Pin	8
174	605	Edgewater Circle	Maple-Sugar	7
175	701	Edgewater Circle	Maple-Red	2
176	701	Edgewater Circle	Maple-Sugar	7
177	701	Edgewater Circle	Maple-Red	2
178	701	Edgewater Circle	Oak- Northern Red	13
179	701	Edgewater Circle	Oak - Scarlet	9
180	801	Edgewater Circle	Maple-Sugar	6
181	801	Edgewater Circle	Oak-Water	10
182	801	Edgewater Circle	Oak-Willow	11
183	803	Edgewater Circle	Maple-Sugar	6
184	803	Edgewater Circle	Maple-Sugar	8
185	805	Edgewater Circle	Maple-Sugar	6
186	807	Edgewater Circle	Maple-Red	12
187	807	Edgewater Circle	Maple-Red	14
188	807	Edgewater Circle	Maple-Sugar	8
189	807	Edgewater Circle	Maple-Sugar	9
190	905	Edgewater Circle	Maple-Freeman's	7
191	905	Edgewater Circle	Maple-Sugar	3
192	905	Edgewater Circle	Maple-Red	8
193	907	Edgewater Circle	Maple-Sugar	2

Tree ID	Number	Street	Common Name	DBH
194	909	Edgewater Circle	Maple-Sugar	2
195	911	Edgewater Circle	Maple-Sugar	5
196	913	Edgewater Circle	Maple-Sugar	5
197	915	Edgewater Circle	Maple-Sugar	6
198	917	Edgewater Circle	Maple-Red	6
199	919	Edgewater Circle	Maple-Sugar	4
200	921	Edgewater Circle	Maple-Sugar	4
201	923	Edgewater Circle	Maple-Red	6
202	925	Edgewater Circle	Maple-Red	5
203	101	Glade Street	Maple-Sugar	10
204	101	Glade Street	Maple-Sugar	11
205	101	Glade Street	Maple-Sugar	7
206	103	Glade Street	Maple-Sugar	10
207	103	Glade Street	Maple-Red	8
208	105	Glade Street	Maple-Red	8
209	105	Glade Street	Maple-Red	11
210	107	Glade Street	Maple-Red	10
211	109	Glade Street	Maple-Red	9
212	109	Glade Street	Maple-Red	8
213	111	Glade Street	Maple-Red	8
214	111	Glade Street	Maple-Sugar	10
215	113	Glade Street	Maple-Red	7
216	113	Glade Street	Maple-Red	13
217	201	Glade Street	Maple-Red	8
218	201	Glade Street	Maple-Red	8
219	201	Glade Street	Maple-Freeman's	13
220	203	Glade Street	Maple-Red	8
221	203	Glade Street	Maple-Norway	6

Tree ID	Number	Street	Common Name	DBH
222	205	Glade Street	Maple-Sugar	6
223	205	Glade Street	Maple-Red	7
224	207	Glade Street	Maple-Red	8
225	207	Glade Street	Maple-Red	11
226	208	Glade Street	Maple-Red	8
227	209	Glade Street	Maple-Freeman's	10
228	210	Glade Street	Maple-Sugar	5
229	210	Glade Street	Maple-Freeman's	6
230	211	Glade Street	Maple-Freeman's	7
231	211	Glade Street	Maple-Red	11
232	212	Glade Street	Maple-Red	10
233	212	Glade Street	Maple-Red	9
234	212	Glade Street	Maple-Red	12
235	213	Glade Street	Maple-Red	9
236	214	Glade Street	Maple-Red	8
237	215	Glade Street	Maple-Red	11
238	215	Glade Street	Maple-Red	10
239	215	Glade Street	Maple-Red	9
240	216	Glade Street	Maple-Red	10
241	216	Glade Street	Maple-Red	10
242	216	Glade Street	Maple-Red	10
243	218	Glade Street	Maple-Freeman's	11
244	218	Glade Street	Maple-Freeman's	9
245	220	Glade Street	Maple-Freeman's	9
246	220	Glade Street	Sycamore-American	11
247	220	Glade Street	Sycamore-American	11
248	300	Glade Street	Maple-Freeman's	4
249	300	Glade Street	Sycamore-American	9

Tree ID	Number	Street	Common Name	DBH
250	300	Glade Street	Sycamore-American	9
251	301	Glade Street	Maple-Freeman's	11
252	301	Glade Street	Sycamore-American	12
253	301	Glade Street	Sycamore-American	12
254	302	Glade Street	Maple-Freeman's	6
255	303	Glade Street	Maple-Freeman's	7
256	304	Glade Street	Maple-Freeman's	8
257	305	Glade Street	Maple-Freeman's	6
258	306	Glade Street	Maple-Freeman's	8
259	307	Glade Street	Maple-Freeman's	6
260	308	Glade Street	Maple-Freeman's	8
261	309	Glade Street	Maple-Red	8
262	310	Glade Street	Maple-Freeman's	9
263	101	Glenhaven Drive	Maple-Red	12
264	101	Glenhaven Drive	Maple-Red	12
265	101	Glenhaven Drive	Maple-Red	10
266	102	Glenhaven Drive	Maple-Red	11
267	102	Glenhaven Drive	Maple-Red	10
268	102	Glenhaven Drive	Maple-Red	10
269	102	Glenhaven Drive	Maple-Red	12
270	103	Glenhaven Drive	Maple-Red	9
271	103	Glenhaven Drive	Maple-Red	11
272	104	Glenhaven Drive	Maple-Red	12
273	104	Glenhaven Drive	Maple-Red	13
274	105	Glenhaven Drive	Maple-Red	12
275	105	Glenhaven Drive	Maple-Red	5
276	106	Glenhaven Drive	Maple-Red	13
277	106	Glenhaven Drive	Maple-Red	11

Tree ID	Number	Street	Common Name	DBH
278	107	Glenhaven Drive	Maple-Red	10
279	107	Glenhaven Drive	Maple-Red	9
280	108	Glenhaven Drive	Maple-Red	9
281	108	Glenhaven Drive	Maple-Red	8
282	108	Glenhaven Drive	Maple-Red	8
283	108	Glenhaven Drive	Maple-Red	10
284	108	Glenhaven Drive	Maple-Red	9
285	109	Glenhaven Drive	Maple-Red	9
286	111	Glenhaven Drive	Maple-Red	9
287	111	Glenhaven Drive	Maple-Red	10
288	113	Glenhaven Drive	Maple-Red	10
289	115	Glenhaven Drive	Maple-Red	10
290	117	Glenhaven Drive	Maple-Red	10
291	119	Glenhaven Drive	Maple-Red	7
292	121	Glenhaven Drive	Maple-Freeman's	11
293	123	Glenhaven Drive	Maple-Red	12
294	125	Glenhaven Drive	Maple-Red	11
295	125	Glenhaven Drive	Maple-Red	11
296	127	Glenhaven Drive	Maple-Red	9
297	127	Glenhaven Drive	Maple-Red	10
298	200	Glenhaven Drive	Maple-Red	8
299	200	Glenhaven Drive	Maple-Red	8
300	200	Glenhaven Drive	Maple-Red	10
301	201	Glenhaven Drive	Maple-Red	8
302	201	Glenhaven Drive	Maple-Red	9
303	202	Glenhaven Drive	Maple-Red	9
304	202	Glenhaven Drive	Maple-Red	11
305	203	Glenhaven Drive	Maple-Red	10

Tree ID	Number	Street	Common Name	DBH
306	203	Glenhaven Drive	Maple-Red	8
307	204	Glenhaven Drive	Maple-Red	7
308	204	Glenhaven Drive	Maple-Red	11
309	205	Glenhaven Drive	Maple-Red	10
310	205	Glenhaven Drive	Maple-Red	8
311	206	Glenhaven Drive	Maple-Red	8
312	207	Glenhaven Drive	Maple-Red	6
313	207	Glenhaven Drive	Maple-Red	10
314	208	Glenhaven Drive	Maple-Red	8
315	208	Glenhaven Drive	Maple-Red	9
316	208	Glenhaven Drive	Maple-Red	7
317	209	Glenhaven Drive	Maple-Red	9
318	209	Glenhaven Drive	Maple-Red	10
319	210	Glenhaven Drive	Maple-Red	7
320	211	Glenhaven Drive	Maple-Red	11
321	211	Glenhaven Drive	Maple-Red	11
322	211	Glenhaven Drive	Maple-Red	11
323	211	Glenhaven Drive	Maple-Red	12
324	211	Glenhaven Drive	Maple-Red	12
325	212	Glenhaven Drive	Maple-Red	10
326	214	Glenhaven Drive	Maple-Red	11
327	214	Glenhaven Drive	Maple-Red	10
328	100	Graylyn Drive	Oak- Northern Red	5
329	102	Graylyn Drive	Maple-Red	7
330	102	Graylyn Drive	Maple-Red	7
331	102	Graylyn Drive	Oak- Northern Red	4
332	102	Graylyn Drive	Oak-Pin	12
333	103	Graylyn Drive	Oak-Pin	13

Tree ID	Number	Street	Common Name	DBH
334	103	Graylyn Drive	Oak-Pin	10
335	103	Graylyn Drive	Oak-Pin	12
336	103	Graylyn Drive	Maple-Red	7
337	104	Graylyn Drive	Oak- Northern Red	7
338	104	Graylyn Drive	Oak- Northern Red	5
339	105	Graylyn Drive	Oak- Northern Red	6
340	106	Graylyn Drive	Oak-Pin	12
341	106	Graylyn Drive	Oak-Pin	16
342	106	Graylyn Drive	Oak-Pin	13
343	107	Graylyn Drive	Oak-Pin	14
344	108	Graylyn Drive	Oak-Pin	10
345	108	Graylyn Drive	Oak-Pin	12
346	108	Graylyn Drive	Oak-Pin	12
347	109	Graylyn Drive	Oak-Pin	11
348	110	Graylyn Drive	Oak-Pin	13
349	110	Graylyn Drive	Oak-Pin	13
350	112	Graylyn Drive	Oak- Northern Red	13
351	112	Graylyn Drive	Oak- Northern Red	12
352	114	Graylyn Drive	Oak-Pin	14
353	114	Graylyn Drive	Oak-Pin	16
354	116	Graylyn Drive	Oak-White	10
355	116	Graylyn Drive	Oak-Pin	17
356	118	Graylyn Drive	Oak-White	10
357	119	Graylyn Drive	Oak- Northern Red	11
358	120	Graylyn Drive	Oak-Pin	13
359	120	Graylyn Drive	Oak- Northern Red	10
360	121	Graylyn Drive	Oak-Pin	13
361	122	Graylyn Drive	Oak-Pin	13

Tree ID	Number	Street	Common Name	DBH
362	122	Graylyn Drive	Oak- Northern Red	8
363	122	Graylyn Drive	Oak-Pin	13
364	122	Graylyn Drive	Oak-Pin	13
365	123	Graylyn Drive	Oak-Pin	13
366	123	Graylyn Drive	Oak-Pin	14
367	124	Graylyn Drive	Oak-Pin	14
368	125	Graylyn Drive	Oak-Pin	15
369	125	Graylyn Drive	Oak-Pin	14
370	126	Graylyn Drive	Oak-Pin	13
371	127	Graylyn Drive	Oak-Pin	12
372	128	Graylyn Drive	Oak- Northern Red	5
373	129	Graylyn Drive	Oak-Pin	13
374	130	Graylyn Drive	Elm-Chinese	9
375	130	Graylyn Drive	Elm-Chinese	7
376	130	Graylyn Drive	Maple-Red	11
377	130	Graylyn Drive	Maple-Red	5
378	131	Graylyn Drive	Oak-Pin	10
379	133	Graylyn Drive	Oak-Pin	11
380	135	Graylyn Drive	Oak- Northern Red	8
381	137	Graylyn Drive	Oak- Northern Red	7
382	139	Graylyn Drive	Oak- Northern Red	7
383	141	Graylyn Drive	Oak- Northern Red	7
384	143	Graylyn Drive	Oak-Pin	11
385	145	Graylyn Drive	Oak-Pin	9
386	147	Graylyn Drive	Oak- Northern Red	10
387	149	Graylyn Drive	Oak- Northern Red	15
388	149	Graylyn Drive	Oak- Northern Red	12
389	151	Graylyn Drive	Oak-White	9

Tree ID	Number	Street	Common Name	DBH
390	153	Graylyn Drive	Oak- Northern Red	7
391	201	Graylyn Drive	Elm-Chinese	12
392	203	Graylyn Drive	Oak- Northern Red	8
393	203	Graylyn Drive	Oak- Northern Red	8
394	205	Graylyn Drive	Oak- Northern Red	5
395	207	Graylyn Drive	Oak- Northern Red	8
396	1200	Highgrove Drive	Maple-Red	10
397	1200	Highgrove Drive	Maple-Red	9
398	1200	Highgrove Drive	Maple-Red	9
399	1200	Highgrove Drive	Maple-Red	9
400	1202	Highgrove Drive	Maple-Red	11
401	1301	Highgrove Drive	Maple-Red	13
402	1301	Highgrove Drive	Maple-Red	11
403	1301	Highgrove Drive	Maple-Red	12
404	1303	Highgrove Drive	Maple-Red	13
405	1303	Highgrove Drive	Maple-Red	10
406	1305	Highgrove Drive	Maple-Red	11
407	1307	Highgrove Drive	Maple-Red	9
408	1307	Highgrove Drive	Maple-Red	9
409	1307	Highgrove Drive	Maple-Red	10
410	1307	Highgrove Drive	Maple-Red	10
411	1307	Highgrove Drive	Maple-Red	10
412	300	Highgrove Drive	Elm-Chinese	8
413	300	Highgrove Drive	Elm-Chinese	13
414	301	Highgrove Drive	Sycamore-American	9
415	301	Highgrove Drive	Sycamore-American	9
416	301	Highgrove Drive	Elm-Chinese	10
417	302	Highgrove Drive	Sycamore-American	10

Tree ID	Number	Street	Common Name	DBH
418	302	Highgrove Drive	Sycamore-American	12
419	302	Highgrove Drive	Elm-Chinese	11
420	302	Highgrove Drive	Elm-Chinese	13
421	303	Highgrove Drive	Elm-Chinese	10
422	303	Highgrove Drive	Elm-Chinese	10
423	400	Highgrove Drive	Sycamore-American	9
424	400	Highgrove Drive	Sycamore-American	9
425	400	Highgrove Drive	Elm-Chinese	12
426	401	Highgrove Drive	Elm-Chinese	9
427	401	Highgrove Drive	Elm-Chinese	10
428	402	Highgrove Drive	Elm-Chinese	12
429	403	Highgrove Drive	Elm-Chinese	9
430	403	Highgrove Drive	Elm-Chinese	9
431	404	Highgrove Drive	Elm-Chinese	12
432	405	Highgrove Drive	Elm-Chinese	9
433	406	Highgrove Drive	Elm-Chinese	12
434	406	Highgrove Drive	Elm-Chinese	11
435	408	Highgrove Drive	Elm-Chinese	8
436	408	Highgrove Drive	Maple-Freeman's	8
437	408	Highgrove Drive	Maple-Red	6
438	408	Highgrove Drive	Maple-Red	5
439	500	Highgrove Drive	Elm-Chinese	8
440	500	Highgrove Drive	Maple-Freeman's	9
441	500	Highgrove Drive	Maple-Freeman's	10
442	500	Highgrove Drive	Maple-Freeman's	8
443	501	Highgrove Drive	Elm-Chinese	10
444	503	Highgrove Drive	Elm-Chinese	10
445	504	Highgrove Drive	Elm-Chinese	10

Tree ID	Number	Street	Common Name	DBH
446	505	Highgrove Drive	Elm-Chinese	9
447	506	Highgrove Drive	Elm-Chinese	10
448	507	Highgrove Drive	Elm-Chinese	9
449	508	Highgrove Drive	Elm-Chinese	4
450	509	Highgrove Drive	Elm-Chinese	10
451	510	Highgrove Drive	Elm-Chinese	8
452	511	Highgrove Drive	Elm-Chinese	12
453	512	Highgrove Drive	Elm-Chinese	7
454	513	Highgrove Drive	Elm-Chinese	12
455	513	Highgrove Drive	Elm-Chinese	12
456	514	Highgrove Drive	Elm-Chinese	9
457	515	Highgrove Drive	Elm-Chinese	5
458	516	Highgrove Drive	Elm-Chinese	7
459	518	Highgrove Drive	Elm-Chinese	12
460	519	Highgrove Drive	Elm-Chinese	11
461	520	Highgrove Drive	Elm-Chinese	9
462	521	Highgrove Drive	Elm-Chinese	11
463	521	Highgrove Drive	Elm-Chinese	10
464	522	Highgrove Drive	Elm-Chinese	7
465	524	Highgrove Drive	Elm-Chinese	10
466	524	Highgrove Drive	Elm-Chinese	12
467	526	Highgrove Drive	Elm-Chinese	15
468	600	Highgrove Drive	Elm-Chinese	10
469	601	Highgrove Drive	Elm-Chinese	12
470	601	Highgrove Drive	Elm-Chinese	14
471	602	Highgrove Drive	Elm-Chinese	16
472	602	Highgrove Drive	Elm-Chinese	11
473	603	Highgrove Drive	Elm-Chinese	12

Tree ID	Number	Street	Common Name	DBH
474	603	Highgrove Drive	Elm-Chinese	14
475	604	Highgrove Drive	Elm-Chinese	11
476	604	Highgrove Drive	Elm-Chinese	14
477	605	Highgrove Drive	Elm-Chinese	15
478	605	Highgrove Drive	Maple-Trident	4
479	605	Highgrove Drive	Maple-Trident	4
480	605	Highgrove Drive	Sycamore-American	12
481	610	Highgrove Drive	Oak-Overcup	9
482	610	Highgrove Drive	Oak-Overcup	6
483	700	Highgrove Drive	Elm-Chinese	10
484	702	Highgrove Drive	Oak-Overcup	8
485	702	Highgrove Drive	Oak-Post	6
486	703	Highgrove Drive	Sycamore-American	14
487	703	Highgrove Drive	Oak-Overcup	9
488	704	Highgrove Drive	Oak-Post	9
489	704	Highgrove Drive	Oak-Overcup	9
490	705	Highgrove Drive	Oak-Overcup	10
491	706	Highgrove Drive	Maple-Red	10
492	706	Highgrove Drive	Oak-Post	8
493	707	Highgrove Drive	Oak-Overcup	7
494	708	Highgrove Drive	Sycamore-American	13
495	709	Highgrove Drive	Oak-Overcup	11
496	800	Highgrove Drive	Maple-Red	6
497	800	Highgrove Drive	Oak-Overcup	6
498	802	Highgrove Drive	Oak-Overcup	5
499	802	Highgrove Drive	Oak-Overcup	6
500	803	Highgrove Drive	Maple-Red	5
501	804	Highgrove Drive	Oak-Overcup	7

Tree ID	Number	Street	Common Name	DBH
502	805	Highgrove Drive	Oak-Overcup	8
503	806	Highgrove Drive	Oak-Overcup	7
504	807	Highgrove Drive	Oak-Overcup	8
505	808	Highgrove Drive	Oak-Overcup	7
506	808	Highgrove Drive	Maple-Sugar	5
507	808	Highgrove Drive	Maple-Sugar	8
508	809	Highgrove Drive	Oak-Overcup	6
509	809	Highgrove Drive	Oak-Overcup	8
510	811	Highgrove Drive	Maple-Red	8
511	813	Highgrove Drive	Maple-Red	6
512	101	Hillspring Drive	Elm-Chinese	13
513	101	Hillspring Drive	Elm-Chinese	13
514	101	Hillspring Drive	Sycamore-American	11
515	101	Hillspring Drive	Sycamore-American	14
516	105	Hillspring Drive	Sycamore-American	9
517	107	Hillspring Drive	Sycamore-American	12
518	109	Hillspring Drive	Sycamore-American	11
519	109	Hillspring Drive	Sycamore-American	11
520	111	Hillspring Drive	Sycamore-American	11
521	111	Hillspring Drive	Sycamore-American	9
522	113	Hillspring Drive	Sycamore-American	9
523	113	Hillspring Drive	Sycamore-American	11
524	113	Hillspring Drive	Sycamore-American	14
525	115	Hillspring Drive	Sycamore-American	12
526	117	Hillspring Drive	Sycamore-American	13
527	119	Hillspring Drive	Sycamore-American	13
528	119	Hillspring Drive	Sycamore-American	15
529	119	Hillspring Drive	Sycamore-American	15

Tree ID	Number	Street	Common Name	DBH
530	121	Hillspring Drive	Sycamore-American	15
531	121	Hillspring Drive	Sycamore-American	14
532	123	Hillspring Drive	Sycamore-American	14
533	123	Hillspring Drive	Sycamore-American	11
534	125	Hillspring Drive	Sycamore-American	11
535	125	Hillspring Drive	Sycamore-American	9
536	127	Hillspring Drive	Sycamore-American	13
537	102	Hillspring Lane	Sycamore-American	11
538	104	Hillspring Lane	Sycamore-American	9
539	106	Hillspring Lane	Sycamore-American	10
540	106	Hillspring Lane	Sycamore-American	13
541	108	Hillspring Lane	Sycamore-American	12
542	110	Hillspring Lane	Sycamore-American	8
543	112	Hillspring Lane	Sycamore-American	7
544	114	Hillspring Lane	Sycamore-American	10
545	114	Hillspring Lane	Pistache-Chinese	4
546	116	Hillspring Lane	Sycamore-American	10
547	118	Hillspring Lane	Maple-Red	1
548	118	Hillspring Lane	Sycamore-American	10
549	120	Hillspring Lane	Sycamore-American	10
550	122	Hillspring Lane	Sycamore-American	12
551	124	Hillspring Lane	Sycamore-American	12
552	124	Hillspring Lane	Sycamore-American	10
553	126	Hillspring Lane	Sycamore-American	13
554	126	Hillspring Lane	Sycamore-American	13
555	130	Hillspring Lane	Elm-Chinese	13
556	130	Hillspring Lane	Elm-Chinese	14
557	130	Hillspring Lane	Sycamore-American	12

Tree ID	Number	Street	Common Name	DBH
558	130	Hillspring Lane	Sycamore-American	10
559	102	Meeting Street	Maple-Red	11
560	102	Meeting Street	Maple-Red	14
562	103	Meeting Street	Maple-Red	11
563	104	Meeting Street	Maple-Red	13
564	105	Meeting Street	Maple-Red	13
565	106	Meeting Street	Maple-Red	16
567	107	Meeting Street	Maple-Red	11
568	108	Meeting Street	Maple-Red	11
569	108	Meeting Street	Maple-Red	12
570	109	Meeting Street	Maple-Red	7
571	109	Meeting Street	Maple-Red	11
572	109	Meeting Street	Maple-Red	10
573	112	Meeting Street	Maple-Red	12
574	114	Meeting Street	Maple-Red	14
575	100	Newell Street	Sycamore-American	12
576	100	Newell Street	Sycamore-American	11
577	100	Newell Street	Maple-Freeman's	4
578	101	Newell Street	Maple-Red	19
579	101	Newell Street	Maple-Sugar	10
580	102	Newell Street	Maple-Red	12
581	103	Newell Street	Maple-Red	14
582	103	Newell Street	Maple-Red	12
583	104	Newell Street	Maple-Red	8
584	105	Newell Street	Maple-Red	14
585	107	Newell Street	Maple-Red	14
586	109	Newell Street	Maple-Sugar	10
587	109	Newell Street	Maple-Red	12

Tree ID	Number	Street	Common Name	DBH
588	109	Newell Street	Maple-Red	14
589	100	Overlake Drive	Maple-Sugar	4
590	100	Overlake Drive	Sycamore-American	13
591	100	Overlake Drive	Sycamore-American	8
592	100	Overlake Drive	Sycamore-American	11
593	101	Overlake Drive	Maple-Red	9
594	101	Overlake Drive	Maple-Red	7
595	102	Overlake Drive	Sycamore-American	13
596	103	Overlake Drive	Sycamore-American	13
597	103	Overlake Drive	Sycamore-American	12
598	105	Overlake Drive	Sycamore-American	12
599	107	Overlake Drive	Sycamore-American	10
600	107	Overlake Drive	Sycamore-American	12
601	200	Overlake Drive	Sycamore-American	12
602	201	Overlake Drive	Sycamore-American	10
603	201	Overlake Drive	Zelkova-Japanese	12
604	202	Overlake Drive	Sycamore-American	16
605	203	Overlake Drive	Sycamore-American	11
606	203	Overlake Drive	Sycamore-American	8
607	204	Overlake Drive	Sycamore-American	14
608	204	Overlake Drive	Sycamore-American	16
609	205	Overlake Drive	Sycamore-American	12
610	205	Overlake Drive	Sycamore-American	11
611	206	Overlake Drive	Sycamore-American	13
612	207	Overlake Drive	Sycamore-American	11
613	209	Overlake Drive	Sycamore-American	9
614	209	Overlake Drive	Sycamore-American	17
615	211	Overlake Drive	Sycamore-American	13

Tree ID	Number	Street	Common Name	DBH
616	213	Overlake Drive	Maple-Red	6
617	213	Overlake Drive	Maple-Red	8
618	213	Overlake Drive	Maple-Red	6
619	213	Overlake Drive	Maple-Red	6
620	213	Overlake Drive	Sycamore-American	14
621	213	Overlake Drive	Sycamore-American	13
622	101	Parkside Circle	Maple-Red	15
623	101	Parkside Circle	Maple-Red	14
624	103	Parkside Circle	Maple-Red	11
625	104	Parkside Circle	Maple-Red	10
626	104	Parkside Circle	Maple-Red	12
627	105	Parkside Circle	Maple-Red	11
628	105	Parkside Circle	Maple-Red	8
629	106	Parkside Circle	Maple-Red	12
630	106	Parkside Circle	Maple-Red	12
631	107	Parkside Circle	Maple-Red	9
632	107	Parkside Circle	Maple-Red	10
633	108	Parkside Circle	Maple-Red	12
634	108	Parkside Circle	Maple-Red	16
635	109	Parkside Circle	Maple-Red	9
636	111	Parkside Circle	Maple-Red	9
637	200	Parkside Circle	Maple-Red	13
638	201	Parkside Circle	Maple-Red	10
639	202	Parkside Circle	Maple-Red	14
640	202	Parkside Circle	Maple-Red	15
641	203	Parkside Circle	Maple-Red	14
642	203	Parkside Circle	Maple-Red	9
643	204	Parkside Circle	Maple-Red	15

Tree ID	Number	Street	Common Name	DBH
644	204	Parkside Circle	Maple-Red	17
645	205	Parkside Circle	Maple-Red	10
646	205	Parkside Circle	Maple-Red	10
647	206	Parkside Circle	Maple-Red	11
648	206	Parkside Circle	Maple-Red	10
649	207	Parkside Circle	Maple-Red	8
650	207	Parkside Circle	Maple-Red	10
651	208	Parkside Circle	Maple-Red	11
652	208	Parkside Circle	Maple-Red	14
653	208	Parkside Circle	Maple-Red	12
654	208	Parkside Circle	Maple-Red	14
655	209	Parkside Circle	Maple-Red	9
656	209	Parkside Circle	Maple-Red	14
657	211	Parkside Circle	Maple-Red	10
658	211	Parkside Circle	Maple-Red	13
659	213	Parkside Circle	Maple-Silver	10
660	213	Parkside Circle	Maple-Red	12
661	303	Parkside Circle	Oak-Pin	13
662	305	Parkside Circle	Oak-Pin	14
663	307	Parkside Circle	Oak-Pin	17
664	309	Parkside Circle	Oak-Pin	13
665	311	Parkside Circle	Oak-Pin	14
666	401	Parkside Circle	Oak-Pin	15
667	403	Parkside Circle	Oak-Pin	18
668	405	Parkside Circle	Oak-Pin	14
669	409	Parkside Circle	Oak-Pin	14
670	409	Parkside Circle	Oak-Pin	15
671	409	Parkside Circle	Oak-Pin	18

Tree ID	Number	Street	Common Name	DBH
672	501	Parkside Circle	Oak - Scarlet	6
673	503	Parkside Circle	Oak - Scarlet	13
674	507	Parkside Circle	Oak - Scarlet	9
675	511	Parkside Circle	Oak- Northern Red	7
676	513	Parkside Circle	Oak - Scarlet	11
677	515	Parkside Circle	Oak- Northern Red	6
678	517	Parkside Circle	Oak- Northern Red	9
679	100	Parkview Crescent	Oak - Shumard	11
680	100	Parkview Crescent	Maple-Red	8
681	100	Parkview Crescent	Maple-Red	8
682	101	Parkview Crescent	Maple-Red	6
683	101	Parkview Crescent	Maple-Red	5
684	101	Parkview Crescent	Oak - Shumard	13
685	101	Parkview Crescent	Oak - Shumard	13
686	101	Parkview Crescent	Oak - Shumard	16
687	102	Parkview Crescent	Maple-Red	7
688	103	Parkview Crescent	Maple-Red	5
689	104	Parkview Crescent	Maple-Red	12
690	105	Parkview Crescent	Maple-Red	4
691	105	Parkview Crescent	Maple-Red	10
692	105	Parkview Crescent	Maple-Red	10
693	105	Parkview Crescent	Maple-Red	7
694	106	Parkview Crescent	Maple-Red	11
695	108	Parkview Crescent	Maple-Red	13
696	110	Parkview Crescent	Maple-Red	12
697	300	Parkview Crescent	Maple-Freeman's	9
698	300	Parkview Crescent	Maple-Red	10
699	300	Parkview Crescent	Maple-Red	9

Tree ID	Number	Street	Common Name	DBH
700	303	Parkview Crescent	Maple-Freeman's	12
701	303	Parkview Crescent	Maple-Red	8
702	304	Parkview Crescent	Maple-Red	11
703	305	Parkview Crescent	Maple-Red	7
704	307	Parkview Crescent	Oak-Overcup	8
705	307	Parkview Crescent	Maple-Red	7
706	402	Parkview Crescent	Maple-Red	10
707	404	Parkview Crescent	Maple-Red	6
708	404	Parkview Crescent	Maple-Red	9
709	404	Parkview Crescent	Maple-Red	11
710	405	Parkview Crescent	Maple-Red	9
711	407	Parkview Crescent	Maple-Red	9
712	408	Parkview Crescent	Maple-Red	9
713	408	Parkview Crescent	Maple-Red	8
714	409	Parkview Crescent	Maple-Red	9
715	409	Parkview Crescent	Maple-Red	8
716	409	Parkview Crescent	Maple-Red	13
717	410	Parkview Crescent	Maple-Freeman's	9
718	412	Parkview Crescent	Maple-Sugar	8
719	412	Parkview Crescent	Maple-Freeman's	9
720	500	Parkview Crescent	Sycamore-American	10
721	500	Parkview Crescent	Maple-Sugar	6
722	500	Parkview Crescent	Maple-Red	7
723	502	Parkview Crescent	Maple-Red	7
724	502	Parkview Crescent	Maple-Red	7
725	504	Parkview Crescent	Maple-Red	8
726	506	Parkview Crescent	Maple-Red	7
727	600	Parkview Crescent	Maple-Red	7

Tree ID	Number	Street	Common Name	DBH
728	602	Parkview Crescent	Maple-Red	8
729	604	Parkview Crescent	Maple-Red	9
730	604	Parkview Crescent	Maple-Red	6
731	700	Parkview Crescent	Maple-Red	6
732	702	Parkview Crescent	Maple-Red	7
733	702	Parkview Crescent	Maple-Sugar	6
734	702	Parkview Crescent	Maple-Sugar	6
735	106	Tharrington Drive	Oak-Overcup	7
736	107	Tharrington Drive	Oak-Water	12
737	108	Tharrington Drive	Oak-Water	17
738	109	Tharrington Drive	Oak-Water	14
739	110	Tharrington Drive	Oak-Water	17
740	111	Tharrington Drive	Oak-Water	11
741	112	Tharrington Drive	Oak-Water	14
742	113	Tharrington Drive	Oak-Water	12
743	114	Tharrington Drive	Oak-Water	12
744	115	Tharrington Drive	Oak-Willow	8
745	116	Tharrington Drive	Oak-Water	14
746	117	Tharrington Drive	Oak-Water	11
747	118	Tharrington Drive	Oak-Willow	14
748	119	Tharrington Drive	Oak-Willow	13
749	120	Tharrington Drive	Oak-Water	14
750	120	Tharrington Drive	Oak-Water	14
751	121	Tharrington Drive	Oak-Willow	13
752	122	Tharrington Drive	Oak-Water	14
753	124	Tharrington Drive	Oak-Water	12
754	126	Tharrington Drive	Oak-Willow	12
755	126	Tharrington Drive	Maple-Sugar	9

Tree ID	Number	Street	Common Name	DBH
756	100	Westside Drive	Maple-Sugar	6
757	104	Westside Drive	Maple-Sugar	6
758	106	Westside Drive	Maple-Red	9
759	108	Westside Drive	Maple-Sugar	5
760	110	Westside Drive	Maple-Red	6
761	112	Westside Drive	Maple-Freeman's	5
762	114	Westside Drive	Oak- Northern Red	11
763	114	Westside Drive	Maple-Red	12
764	12	Westside Drive	Sycamore-American	13
765	205	Westside Drive	Sycamore-American	10
766	205	Westside Drive	Sycamore-American	10
767	205	Westside Drive	Sycamore-American	8
768	205	Westside Drive	Sycamore-American	10
769	208	Westside Drive	Sycamore-American	9
770	208	Westside Drive	Sycamore-American	15
771	209	Westside Drive	Sycamore-American	12
772	210	Westside Drive	Sycamore-American	10
773	211	Westside Drive	Sycamore-American	7
774	212	Westside Drive	Sycamore-American	9
775	213	Westside Drive	Sycamore-American	11
776	214	Westside Drive	Sycamore-American	12
777	215	Westside Drive	Sycamore-American	8
778	215	Westside Drive	Sycamore-American	12
779	215	Westside Drive	Sycamore-American	14
780	216	Westside Drive	Sycamore-American	10
781	217	Westside Drive	Sycamore-American	8
782	218	Westside Drive	Sycamore-American	10
783	220	Westside Drive	Sycamore-American	9

Tree ID	Number	Street	Common Name	DBH
784	220	Westside Drive	Sycamore-American	12
785	222	Westside Drive	Sycamore-American	8
786	222	Westside Drive	Hornbeam-European	1
787	222	Westside Drive	Sycamore-American	9
788	301	Westside Drive	Maple-Red	11
789	301	Westside Drive	Sycamore-American	8
790	301	Westside Drive	Sycamore-American	11
791	302	Westside Drive	Sycamore-American	10
792	302	Westside Drive	Sycamore-American	8
793	303	Westside Drive	Sycamore-American	12
794	304	Westside Drive	Sycamore-American	11
795	305	Westside Drive	Sycamore-American	12
796	305	Westside Drive	Sycamore-American	14
797	306	Westside Drive	Sycamore-American	7
798	307	Westside Drive	Sycamore-American	12
799	307	Westside Drive	Sycamore-American	15
800	308	Westside Drive	Sycamore-American	9
801	308	Westside Drive	Sycamore-American	8
802	309	Westside Drive	Sycamore-American	8
803	310	Westside Drive	Sycamore-American	10
804	310	Westside Drive	Sycamore-American	11
805	311	Westside Drive	Sycamore-American	12
806	311	Westside Drive	Sycamore-American	11
807	312	Westside Drive	Sycamore-American	6
808	312	Westside Drive	Sycamore-American	10
809	313	Westside Drive	Sycamore-American	12
810	314	Westside Drive	Sycamore-American	8
811	314	Westside Drive	Sycamore-American	7

Tree ID	Number	Street	Common Name	DBH
812	314	Westside Drive	Sycamore-American	7
813	314	Westside Drive	Sycamore-American	8
814	315	Westside Drive	Sycamore-American	9
815	315	Westside Drive	Sycamore-American	9
816	317	Westside Drive	Sycamore-American	13
817	319	Westside Drive	Sycamore-American	11
818	321	Westside Drive	Sycamore-American	12
819	321	Westside Drive	Sycamore-American	11
820	100	Winston Ridge Drive	Zelkova-Japanese	13
821	100	Winston Ridge Drive	Zelkova-Japanese	10
822	101	Winston Ridge Drive	Honeylocust-Thornless Common	14
823	101	Winston Ridge Drive	Zelkova-Japanese	12
824	102	Winston Ridge Drive	Zelkova-Japanese	11
825	103	Winston Ridge Drive	Zelkova-Japanese	14
826	104	Winston Ridge Drive	Zelkova-Japanese	15
827	105	Winston Ridge Drive	Zelkova-Japanese	5
828	106	Winston Ridge Drive	Honeylocust-Thornless Common	9
829	106	Winston Ridge Drive	Zelkova-Japanese	12
830	107	Winston Ridge Drive	Zelkova-Japanese	13

Tree ID	Number	Street	Common Name	DBH
831	107	Winston Ridge Drive	Zelkova-Japanese	17
832	108	Winston Ridge Drive	Zelkova-Japanese	11
833	108	Winston Ridge Drive	Maple-Freeman's	7
834	109	Winston Ridge Drive	Maple-Sugar	7
835	109	Winston Ridge Drive	Zelkova-Japanese	14
836	109	Winston Ridge Drive	Zelkova-Japanese	10